



## Serpentine

Featuring Pinkerville by Tula Pink

Sea serpents do exist! You just need a little blind faith.

<b>Collection:</b>	Pinkerville by Tula Pink
<b>Technique:</b>	Paper piecing, Curved piecing
<b>Skill Level:</b>	Advanced
<b>Finished Size:</b>	Finished Size: 64" x 74" (162.56cm x 187.96cm)
	Finished Block Size: 8" (20.32cm) square

Project designed by Tula Pink

Tech edited by Alison M. Schmidt

## Fabric Requirements

DESIGN	COLOR	ARTICLE CODE	YARDAGE
(A) Imaginarium	Daydream	PWTP127.DAYDREAM	Fat Quarter 18" x 21" (45.72cm x 53.34cm)
(B) Imaginarium	CottonCandy	PWTP127.COTTONCANDY	Fat Quarter 18" x 21" (45.72cm x 53.34cm)
(C) Imaginarium	Frolic	PWTP127.FROLIC	Fat Quarter 18" x 21" (45.72cm x 53.34cm)
(D) Gate Keeper	Daydream	PWTP128 .DAYDREAM	Fat Quarter 18" x 21" (45.72cm x 53.34cm)
(E) Gate Keeper	CottonCandy	PWTP128 .COTTONCANDY	Fat Quarter 18" x 21" (45.72cm x 53.34cm)
(F) Gate Keeper	Frolic	PWTP128 .FROLIC	Fat Quarter 18" x 21" (45.72cm x 53.34cm)
(G) Blind Faith	Daydream	PWTP129.DAYDREAM	Fat Quarter 18" x 21" (45.72cm x 53.34cm)
(H) Blind Faith	CottonCandy	PWTP129.COTTONCANDY	Fat Quarter 18" x 21" (45.72cm x 53.34cm)
(I) Blind Faith	Frolic	PWTP129.FROLIC	Fat Quarter 18" x 21" (45.72cm x 53.34cm)
(J) Enlightenment	Daydream	PWTP130.DAYDREAM	Fat Quarter 18" x 21" (45.72cm x 53.34cm)
(K) Enlightenment	CottonCandy	PWTP130.COTTONCANDY	Fat Quarter 18" x 21" (45.72cm x 53.34cm)
(L) Enlightenment	Frolic	PWTP130.FROLIC	Fat Quarter 18" x 21" (45.72cm x 53.34cm)
(M) Serenity	Daydream	PWTP131.DAYDREAM	Fat Quarter 18" x 21" (45.72cm x 53.34cm)
(N) Serenity	CottonCandy	PWTP131.COTTONCANDY	Fat Quarter 18" x 21" (45.72cm x 53.34cm)
(O) Serenity	Frolic	PWTP131.FROLIC	Fat Quarter 18" x 21" (45.72cm x 53.34cm)
(P) Delight	Daydream	PWTP132.DAYDREAM	Fat Quarter 18" x 21" (45.72cm x 53.34cm)
(Q) Delight	CottonCandy	PWTP132.COTTONCANDY	Fat Quarter 18" x 21" (45.72cm x 53.34cm)
(R) Delight	Frolic	PWTP132.FROLIC	Fat Quarter 18" x 21" (45.72cm x 53.34cm)
(S) Fairy Dust	Daydream	PWTP133.DAYDREAM	Fat Quarter 18" x 21" (45.72cm x 53.34cm)
(T) Fairy Dust	CottonCandy	PWTP133.COTTONCANDY	3½ yards (3.20m)
(U) Fairy Dust	Frolic	PWTP133.FROLIC	Fat Quarter 18" x 21" (45.72cm x 53.34cm)
(V) Essential Designer Solids	Diva	CSFSESS.DIVAX	¾ yards (2.97m)
(W) Tent Stripe	Iris	PWTP069.IRISX*	⅝ yard (57.15cm)

\* includes binding

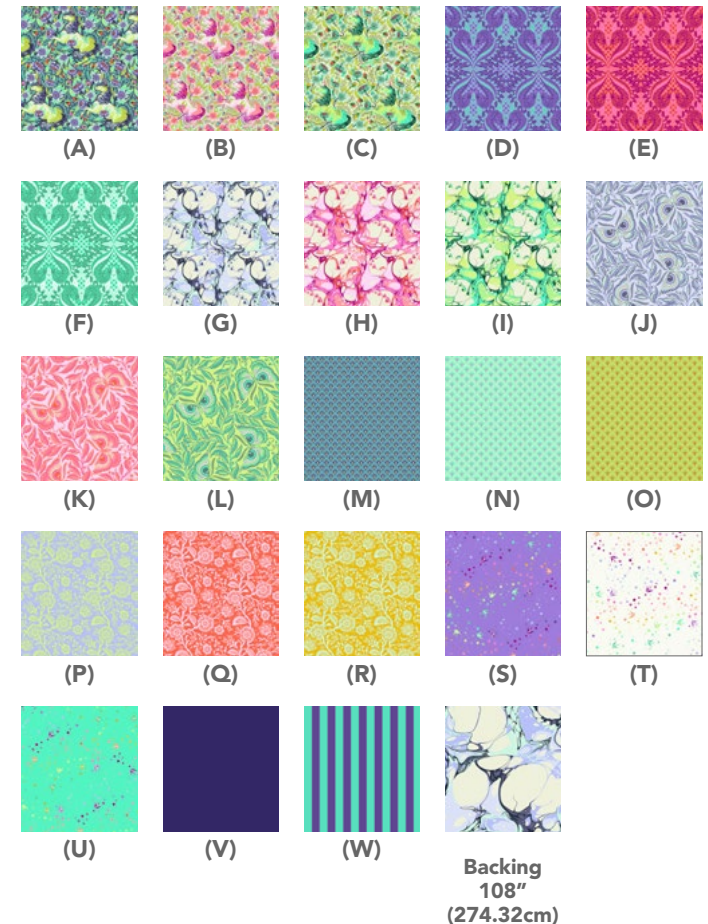
## Backing (Purchased Separately)

44" (111.76cm) wide

OR

108" (274.32cm) wide

Pinkerville Daydream QBTP002.2DAYDREAM 2½ yards (1.94m)



## Additional Requirements

- 100% cotton thread in a color to match
- 72" x 82" (182.88cm x 208.28cm) batting
- Template plastic
- (51) copies of the foundation pattern
- 4" (10.16cm) square fusible web (*optional*)

## Cutting

### WOF = Width of Fabric

Cut out and tape together the pieces of Template 2. Trace Templates 1 and 2 from page 8 onto template plastic and cut on outside lines. To cut fabric pieces, place the templates, right side up, on the right side of the fabric. Trace around template and then cut out.

Cut out (1) foundation pattern piece on the outside lines to use as a template for cutting the head and tail pieces.

### For the serpent's eye:

Fusible applique - trace the eye template onto the paper side of the fusible web. Cut out roughly. Apply the fusible web to the wrong side of the fabric, following the manufacturer's instructions, and cut along the drawn line. Hand appliqué – cut out the eye template, trace on the wrong side of the fabric and cut out adding a 1/4" (.64cm) seam allowance.

Cut WOF strips across the longer side of the fat quarter. Label pieces with fabric letter as they are cut.

### Fabrics A, G, J, K and O through R, cut from each:

- (1) 5 1/4" x WOF (13.34cm x WOF) strip;
- sub-cut (7) 2 3/4" x 5 1/4" (6.99cm x 13.34cm) rectangles
- (3) Template 1

### Fabrics B, E and H, cut from each:

- (2) 5 1/4" x WOF (13.34cm x WOF) strips;
- sub-cut (8) 2 3/4" x 5 1/4" (6.99cm x 13.34cm) rectangles
- (2) Template 1

### Fabrics C, D, F, I, L, N and S, cut from each:

- (1) 5 1/4" x WOF (13.34cm x WOF) strip;
- sub-cut (7) 2 3/4" x 5 1/4" (6.99cm x 13.34cm) rectangles
- (2) Template 1

### Fabric M, cut:

- (1) 5 1/4" x WOF (13.34cm x WOF) strip;
- sub-cut (7) 2 3/4" x 5 1/4" (6.99cm x 13.34cm) rectangles
- (2) Template 1
- (1) Foundation pattern piece

### Fabric T, cut:

- (1) 12 1/2" x WOF (31.75cm x WOF) strip;
  - sub-cut (1) 12 1/2" x 16 1/2" (31.75cm x 41.91cm) rectangle and (1) 8 1/2" x 16 1/2" (21.59cm x 41.91cm) rectangle
  - (7) 8 1/2" x WOF (21.59cm x WOF) strips;
  - sub-cut (51) Template 2\* and (1) 8 1/2" (21.59cm) square
  - (2) 4 1/2" x WOF (11.43cm x WOF) strips;
  - sub-cut (1) 4 1/2" x 40 1/2" (11.43cm x 102.87cm) strip, (1) 4 1/2" (11.43cm) square, (1) 2 1/2" x 4 1/2" (6.35cm x 11.43cm) rectangle, (1) Template 1 and (1) 2 7/8" (7.30cm) square
  - (1) 2 3/4" x WOF (6.99cm x WOF) strip;
  - sub-cut (7) 2 3/4" x 5 1/4" (6.99cm x 13.34cm) rectangles
  - (12) 2 1/2" x WOF (6.35cm x WOF) strips for sashing
- \* Follow the Fabric T Cutting diagram shown right to cut Template 2 efficiently.

### Fabric U, cut:

- (1) 5 1/4" x WOF (13.34cm x WOF) strip;
- sub-cut (7) 2 3/4" x 5 1/4" (6.99cm x 13.34cm) rectangles
- (3) Template 1
- (1) Eye

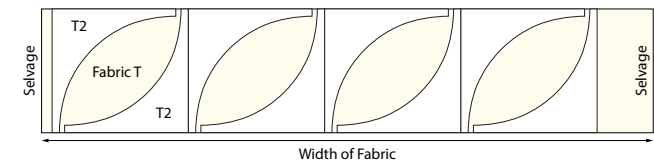
### Fabric V, cut:

- (15) 2 3/4" x WOF (6.99cm x WOF) strips; sub-cut (100) 2 3/4" x 5 1/4" (6.99cm x 13.34cm) rectangles
- (15) 4 1/2" x WOF (11.43cm x WOF) strips; sub-cut (100) 4 1/2" x 5 1/4" (11.43cm x 13.34cm) rectangles, (2) Template 1 and (1) 2 7/8" (7.30cm) square

### Fabric W, cut:

Enough 2 1/2" (6.35cm) bias strips to make 295" (7.49m) of finished binding

## Cutting Diagram

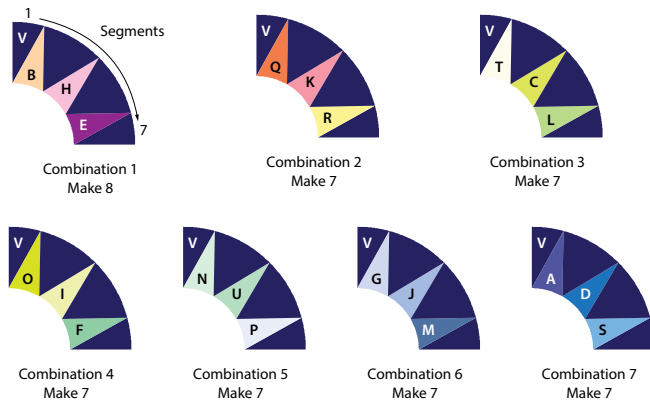


## Instructions

All seam allowances are  $\frac{1}{4}$ " (.64cm) and pieces are sewn right sides together. This pattern assumes a basic knowledge of foundation and curved piecing.

- Using a preferred method of paper piecing, piece (50) foundations using the foundation pattern on page 7 in the fabric combinations in **Fig. 1**, following the numerical order and fabric sizes on the paper foundation. Trim each block, cutting on the outside line of each paper foundation, and then carefully remove the paper.

Fig. 1



- Sew a Template 1 piece to the inner curve of the pieced foundations (**Fig. 2**), combining the fabrics in the table provided. Press the seam allowances towards Template 1. Tip: Sew with the Template 1 piece against the bed of the sewing machine, pinning the curves together at the beginning, end, and center, matching the raw edges in between while sewing the seam.

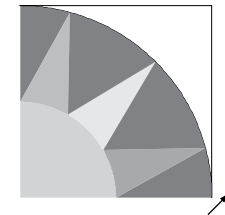
Fig. 2



Pieced Foundation	Template 1 Fabrics
Combination 1	(1) <b>B, M</b> and <b>T</b> , (2) <b>K</b> and (3) <b>Q</b>
Combination 2	(1) <b>B, K</b> and <b>U</b> and (2) <b>H</b> and <b>E</b>
Combination 3	(1) <b>F</b> and <b>N</b> , (2) <b>R</b> and (3) <b>O</b>
Combination 4	(1) <b>N, R</b> and <b>U</b> and (2) <b>C</b> and <b>L</b>
Combination 5	(1) <b>F</b> and (2) <b>G, I</b> and <b>J</b>
Combination 6	(2) <b>D</b> and <b>S</b> and (3) <b>A</b>
Combination 7	(1) <b>G, J, M</b> and <b>U</b> and (3) <b>P</b>

- Sew a **Fabric T** Template 2 to the outside curve of the pieced foundations to complete (50) Body Blocks ( $8\frac{1}{2}$ " (21.59cm) square). (**Fig. 3**) Press the seam allowance towards Template 2.

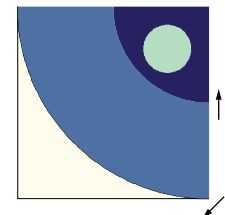
Fig. 3



Body Block  
Make 50

- Sew the **Fabric M** full foundation piece between a **Fabric V** Template 1 and **Fabric T** Template 2. Appliqué the eye to the center of the **Fabric V** Template 1 to complete the Face Block ( $8\frac{1}{2}$ " (21.59cm) square). (**Fig. 4**)

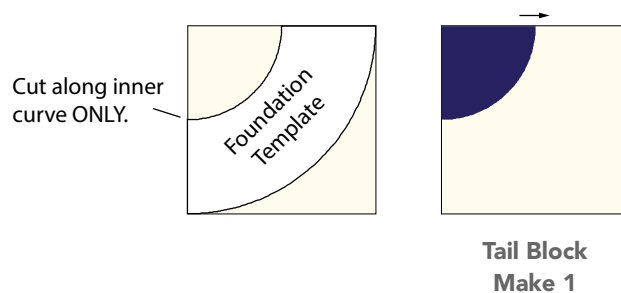
Fig. 4



Face Block  
Make 1

- Place the foundation template on the right side of the  $8\frac{1}{2}$ " (21.59cm) **Fabric T** square as shown, matching the straight edges (**Fig. 5**). Cut along the inner curve of the template **ONLY**. Sew a **Fabric V** Template 1 piece to the curved edge to complete the Tail Block ( $8\frac{1}{2}$ " (21.59cm) square).

Fig. 5



## Quilt Top Assembly

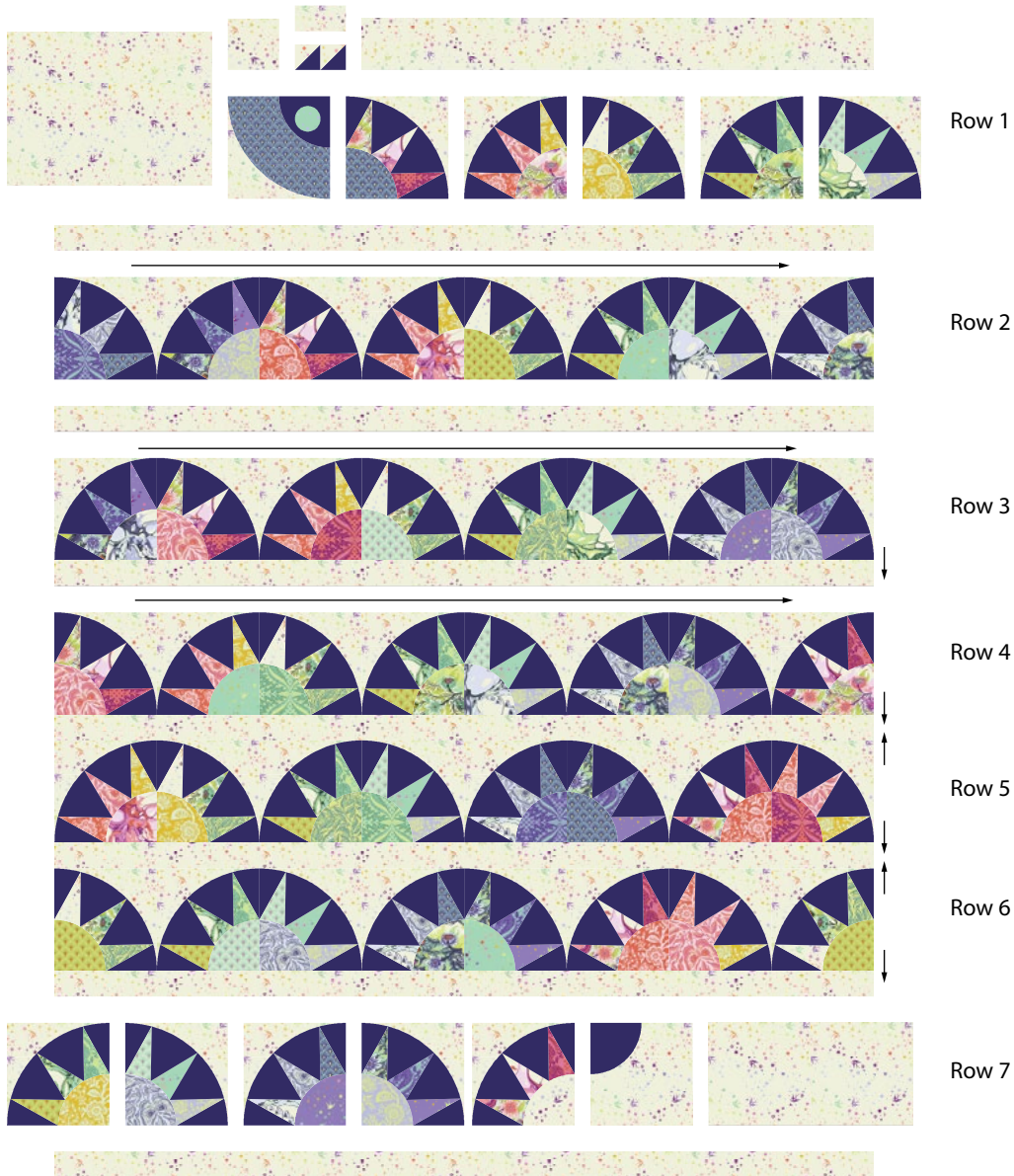
**Note:** Follow the **Quilt Layout** diagram on page 6 while assembling the quilt. All rows should be  $64\frac{1}{2}$ " (163.83cm) long when completed. Row 1 is  $12\frac{1}{2}$ " (31.75cm) high and all other rows are  $8\frac{1}{2}$ " high.

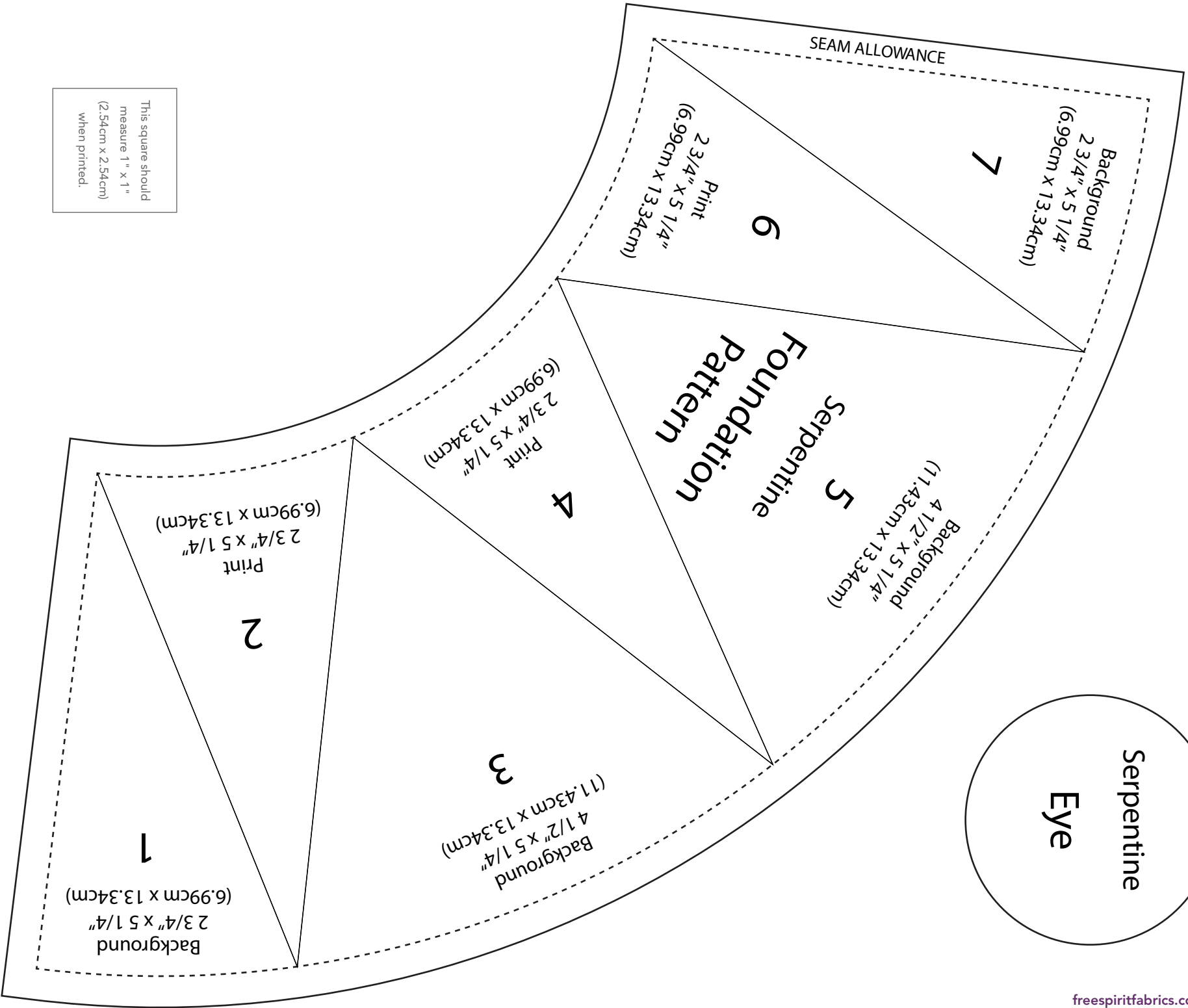
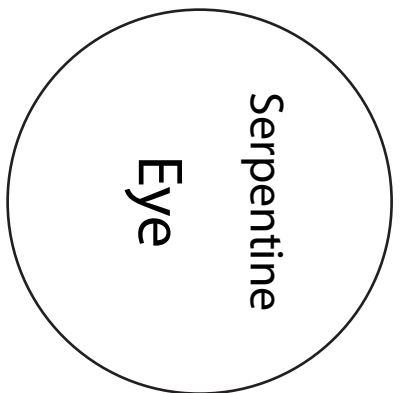
- Draw a line along one diagonal on the wrong side of the  $2\frac{7}{8}$ " (7.30cm) **Fabric T** square. Place it and a  $2\frac{7}{8}$ " (7.30cm) **Fabric V** square right sides together, matching the edges, and pin. Sew  $\frac{1}{4}$ " (.64cm) from each side of the drawn line, cut along the drawn line, and press to make (2) half square triangle units ( $2\frac{1}{2}$ " (6.35cm) square).
- Sew the half square triangle units together and sew them to the bottom of the  $2\frac{1}{2}$ " x  $4\frac{1}{2}$ " (6.35cm x 11.43cm) **Fabric T** rectangle. Sew this unit between the **Fabric T**  $4\frac{1}{2}$ " (11.43cm) square and  $4\frac{1}{2}$ " x  $40\frac{1}{2}$ " (11.43cm x 102.87cm) strip. Press the seam allowances in one direction.
- Sew together the Face Block and (5) Body Blocks, noting orientation and fabric placement for Row 1. Press the seam allowances in the opposite direction as the Step 7 strip.
- Sew the Face and Body Blocks to the bottom of the Step 7 strip. Sew the  $12\frac{1}{2}$ " x  $16\frac{1}{2}$ " (31.75cm x 41.91cm) **Fabric T** rectangle to the Face Block to complete Row 1. Press the seam allowances in one direction.
- Sew together (8) Body Blocks, noting orientation and fabric placement, to make Row 2. Press the seam allowances in one direction.
- Repeat Step 10 to make Rows 3 through 6.
- Sew together (5) Body Blocks, Tail Block and the  $8\frac{1}{2}$ " x  $16\frac{1}{2}$ " (21.59cm x 41.91cm) **Fabric T** rectangle, noting block orientation and fabric placement, to complete Row 7. Press the seam allowances in one direction.
- Sew the (12)  $2\frac{1}{2}$ " (6.35cm) **Fabric T** strips together end to end into a long strip. Cut (7)  $2\frac{1}{2}$ " x  $64\frac{1}{2}$ " (6.35cm x 163.86cm) Sashing strips.
- Sew a Sashing strip to the bottom of each Row and then sew the Rows together in order, pressing the seam allowances towards the sashing, to complete the Quilt top ( $64\frac{1}{2}$ " x  $74\frac{1}{2}$ " (163.83cm x 189.23cm)).

## Finishing

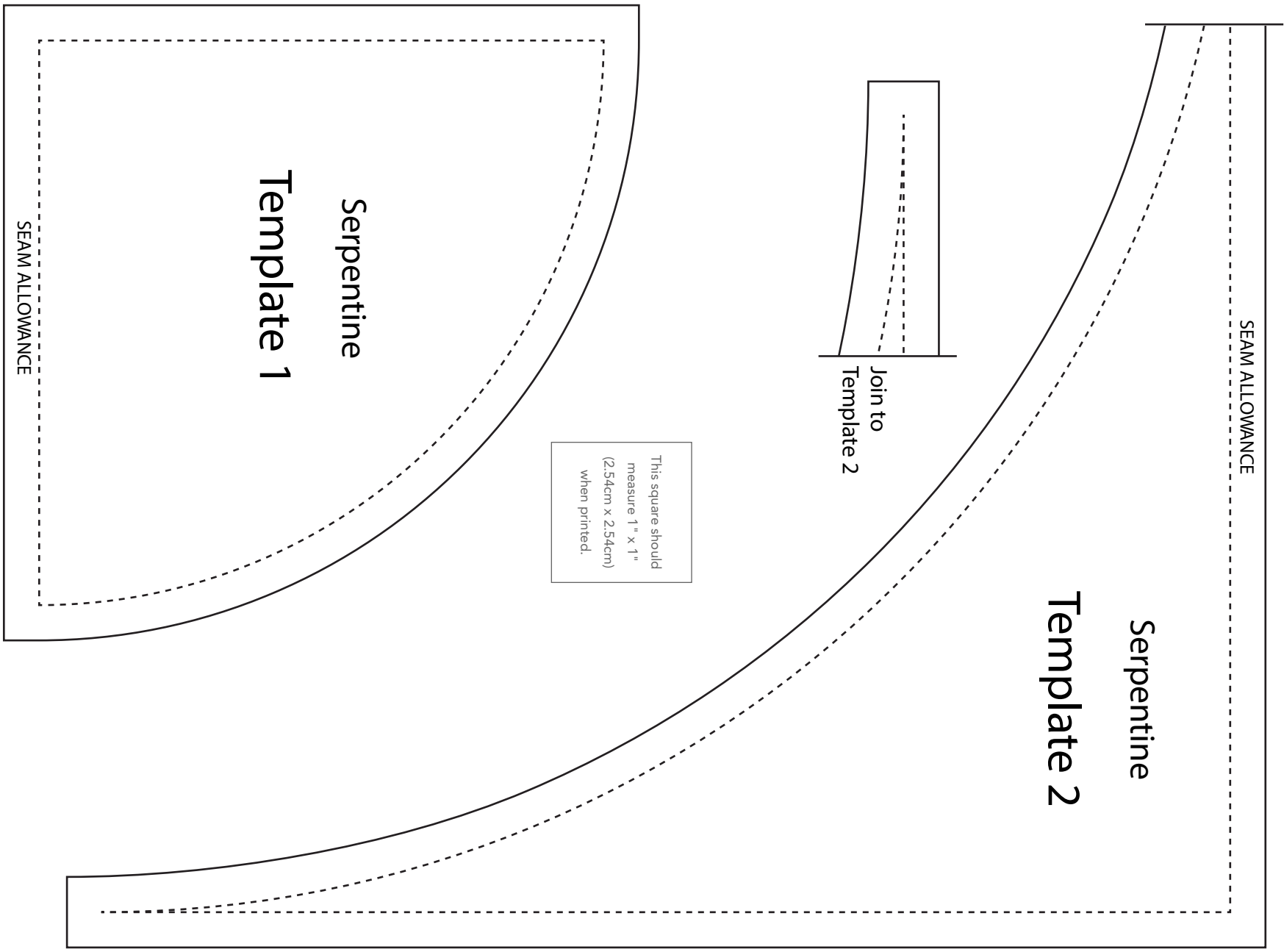
- Sew together the  $2\frac{1}{2}$ " (6.35cm) **Fabric W** bias strips end to end using diagonal seams. Press seams open. Press the binding strip in half wrong sides together.
- Layer backing (wrong side up), batting, and quilt top (right side up). Baste the layers together and quilt as desired. Trim excess batting and backing even with the top after quilting is completed.
- Leaving an 8" (20.32cm) tail of binding, sew the binding to the top of the quilt through all layers matching all raw edges. Miter corners. Stop approximately 12" (30.48cm) from where you started. Lay both loose ends of binding flat along quilt edge. Where the loose ends meet, fold them back on themselves and press to form a crease. Using this crease as your stitching line, sew the two open ends of the binding right sides together. Trim seam to  $\frac{1}{4}$ " (.64cm) and press open. Finish sewing binding to quilt.
- Turn the binding to the back of quilt and hand-stitch in place.

## Quilt Layout





This square should  
measure 1" x 1"  
(2.54cm x 2.54cm)  
when printed.



Serpentine  
Template 1

SEAM ALLOWANCE

This square should  
measure 1" x 1"  
(2.54cm x 2.54cm)  
when printed.

Join to  
Template 2

Serpentine  
Template 2

SEAM ALLOWANCE