

Hand-Tied Patchwork & Sherpa Throw in Artisan by Kaffe Fassett

Editor: Liz Johnson

Monday, 21 November 2016 1:00



If you're looking for bold color and design, you'd be hard-pressed to find anything more dramatic than the fabrics by Kaffe Fassett. His latest collection for FreeSpirit Fabrics is *Artisan*, and it more than lives up to his colorful reputation. Artisan is an eclectic mixture that borrows from the traditional stripes of hand-woven Indian textiles as well as the mod splashes of abstract art we associate with sixties-era fashion. Kaffe is a master at blending and understands that opposites can indeed attract. He's combined an explosion of pattern into a cohesive collection that includes painterly prints, ikat, batik, and more. We've used it for a bohemian throw with a patchwork front that is bound and backed in super soft sherpa-style fleece.



featuring
ARTISAN

KAFFE FASSETT
for FreeSpirit

One of the hallmarks of the Kaffe collections is the size of many of his motifs. He doesn't shy away from big and beautiful. To take advantage of this, our pieces are quite large and each is precisely fussy cut to best showcase the graphics.



Artisan has two colorways. The cool and sophisticated Blue colorway, with its highlights of brown and green, was inspired by a scarf Kaffe discovered in an Egyptian marketplace.

The Sunny colorway, our choice for this project, explodes with the vibrancy of exotic fruit. The base yellows and oranges are playfully combined with an effervescent pink and rich turquoise.



Our thanks to our friends at FreeSpirit Fabrics for inviting us to be a part of the roll-out of this beautiful new collection. It brought a welcome blast of color into the gray days of fall and winter.

We found a lovely selection of *Artisan*, including all the cuts we used, at [Fabric Depot](#), [Fat Quarter Shop](#) and [Fabric.com](#).

The eye-catching stitches in contrasting thread that run along the throw's sashing go through just the top and batting layers. To maintain the curly nap of the sherpa-style fleece, the final quilting of the back to the top is hand-tied with floss.



For hints and tricks about working with plush fabric, you can check out our [Sewing with Plush Fabric tutorial](#). It's not a difficult fabric to sew with, but to create the best results, it helps to know the best practices to follow.



Our throw combines traditional quilting with the more standard layered-and-turned construction of a blanket. Although the piecing done here is quite basic, if you are brand new to patchwork, we have a five-part [Quilting Basics Series](#) you can review.

Our [Artisan](#) throw finishes at approximately 52" wide x 64" high.

Sewing Tools You Need

We ❤️

Janome Skyline S7

- ❖ AcuFeed™ Flex Layered Fabric Feeding System
- ❖ Automatic Presser Foot Lift
- ❖ Auto Thread Cutter
- ❖ 240 Built-in Stitches & 11 Buttonholes

JANOME
WHAT'S NEXT

SKYLINE S7

- [Sewing Machine](#) and standard presser foot
- [Quarter Inch Seam foot](#)
- [Walking or Even Feed foot](#); we used the built-in [AcuFeed Flex™ Fabric Feeding System](#) on our [Janome Skyline S7](#)

Fabric and Other Supplies



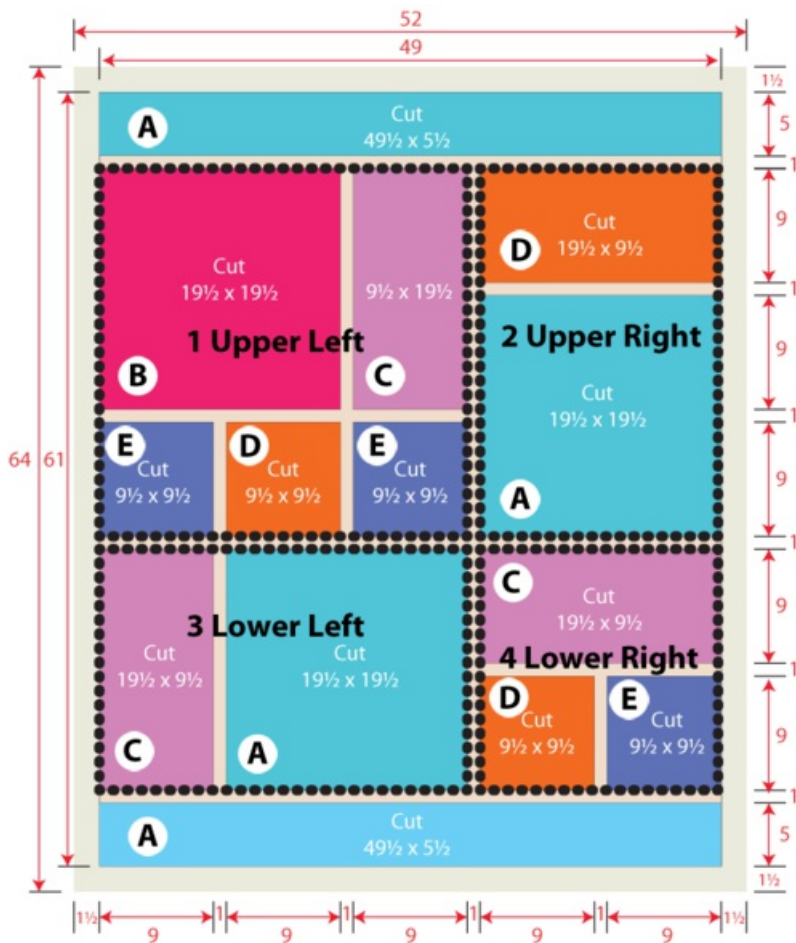
NOTE: Fabric amounts are shown for our Artisan fabric selections with enough specified to allow selective fussy-cutting of the bold motifs. Refer to the layout guide in the Getting Started section below.

- 2 yards of 44"+ wide quilting weight cotton for the A Blocks; we used *Layered Stripe in Orange* from the Artisan collection by Kaffe Fassett for FreeSpirit Fabrics
- $\frac{5}{8}$ yard of 44"+ wide quilting weight cotton for the B Block; we used *Embroidered Flower Border in Orange* from the Artisan collection by Kaffe Fassett for FreeSpirit Fabrics
- $\frac{5}{8}$ yard of 44"+ wide quilting weight cotton for the C Blocks; we used *Ikat Stripe in Yellow* from the Artisan collection by Kaffe Fassett for FreeSpirit Fabrics
- $\frac{5}{8}$ yard of 44"+ wide quilting weight cotton for the D Blocks; we used *Raked in Pumpkin* from the Artisan collection by Kaffe Fassett for FreeSpirit Fabrics
- $\frac{1}{2}$ yard of 44"+ wide quilting weight cotton for the E Blocks; we used *Gerbera in Sunshine* from the Artisan collection by Kaffe Fassett for FreeSpirit Fabrics
- $\frac{1}{2}$ yard of 44"+ wide quilting weight cotton the sashing; we used *Designer Solid Broadcloth in Cream* by FreeSpirit Fabrics
- $2\frac{1}{4}$ yards of 58"+ wide Sherpa Cuddle fleece or similar in a coordinating solid; we used *Sherpa Cuddle in Ivory* by Shannon Fabrics
- 2 yards of 60"+ wide low loft batting
- All-purpose thread to match fabric for piecing; we used *ivory*
- All-purpose thread in a contrasting color for quilting stitches through the sashing; we used a *quilter's weight cotton thread in orange*
- ONE skein of heavy weight floss in a color to match sashing; we used *ivory floss*
- Fabric pen or pencil
- Seam gauge
- Seam ripper

- Scissors or rotary cutter and mat
- Iron and ironing board
- Straight pins
- Two hand sewing needles; *large eye for thread floss and standard for closing the opening used for turning*
- Large safety pins for quilt basting or quilting spray adhesive; *optional*

Getting Started





NOTE: The illustrations above show our selection and placement pattern. To achieve this look, precise fussy cutting and placement of the directional prints is important.

1. **Fabric A: Layered Stripe in Orange**

Cut TWO $19\frac{1}{2}$ " x $19\frac{1}{2}$ " squares

Cut THREE $5\frac{1}{2}$ " high x width of fabric (WOF) strips, cut ONE strip in half and sew a half-length to the end of each of the other two strips, then cut each

of these sewn lengths down to $49\frac{1}{2}$ ", giving you TWO $5\frac{1}{2}$ " x $49\frac{1}{2}$ " strips for the top and bottom of the patchwork



2. **Fabric B: Embroidered Flower Border in Orange**

Cut ONE $19\frac{1}{2}$ " x $19\frac{1}{2}$ " square

3. **Fabric C: Ikat Stripe on Yellow**

Cut THREE 9½" x 19½" rectangles; see diagram above for stripe direction

4. **Fabric D: Raked in Pumpkin**

Cut ONE 9½" x 19½" rectangle

Cut TWO 9½" x 9½" squares

5. **Fabric E: Gerbera in Sunshine**

Cut THREE 9½" x 9½" squares

6. **From the fabric for the sashing**

Cut NINE 1½" x WOF strips, then sub-cut these strips as follows:

THREE at 1½" x 9½"

EIGHT at 1½" x 19½"

TWO at 1½" x 29½"

THREE at 1½" x 30"

7. **From the Sherpa Cuddle for back as well as the strips for the top, bottom, and sides**

Cut ONE 52½" wide x 64½" high piece for the main back panel

Cut TWO strips for the sides running lengthwise next to the main back panel: 2" wide x 64½" high

CUT TWO strips for the top and bottom running width of fabric: 52½" wide x 2" high

NOTE: At 60" wide and 2¼ yards in length, you have the choice to cut the side strips as described above or to cut all the strips WOF and then piece lengths to create the longer side strips. Some people prefer working with all WOF strips in order to avoid any possible issues with stretching. Personal choice.

8. Leave the batting as one piece. It will be layered and cut within the steps below.

At Your Sewing Machine & Ironing Board

NOTE: Refer to the diagram above to follow along as each of the four main sections are created: upper left, upper right, lower left, and lower right. We will be referring to the pieces by their Kaffe Fassett Artisan collection names and corresponding letter designations throughout.

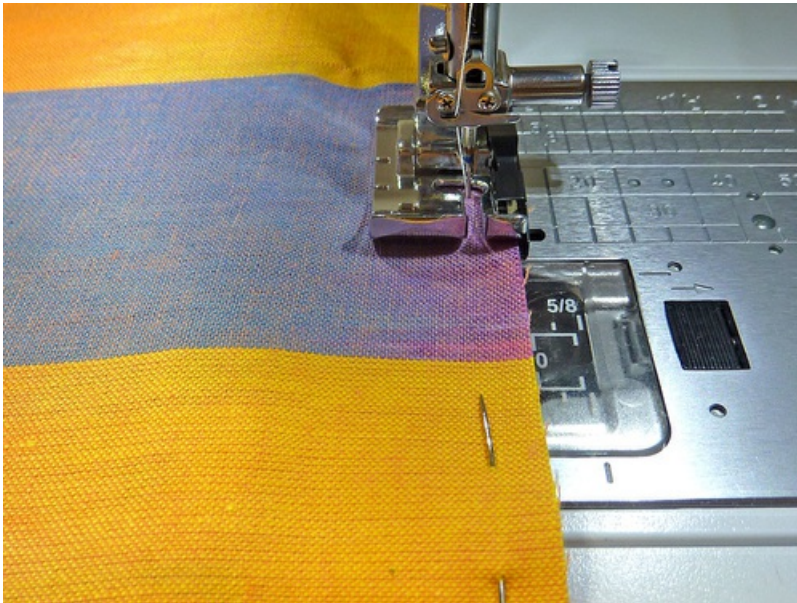
All seam allowances are ¼", and all are pressed toward the sashing strips. We used a Quarter Inch Seam foot for all piecing.

Upper Left Section

1. Collect the pieces that make up the upper left section: one Fabric B 19½" x 19½" square, one Fabric C 9½" x 19½" rectangle, one Fabric D 9½" x 9½" square, two Fabric E 9½" x 9½" squares, one 1½" x 19½" sashing strip, two 1½" x 29½" sashing strips, and two 1½" x 9½" sashing strips.
2. Pin the 1½" x 19½" sashing strip to the right hand side of the Fabric B 19½" x 19½" square. Stitch in place.



3. Pin the Fabric C 9½" x 19½" rectangle to the remaining raw edge of the sashing strip. Stitch in place.



NOTE: As noted above, all seam allowances are $\frac{1}{4}$ " and all seams are pressed toward the sashing.

4. Pin the $1\frac{1}{2}$ " x $29\frac{1}{2}$ " sashing strip horizontally along the bottom of the B/C sewn panel. Stitch in place. Set aside.



5. With the three $9\frac{1}{2}$ " squares and the two $9\frac{1}{2}$ " sashing strips, pin and stitch together in the following order: Fabric E square, sashing strip, Fabric D square, sashing strip, Fabric E Square.



6. As with all, press the seams toward the sashing.



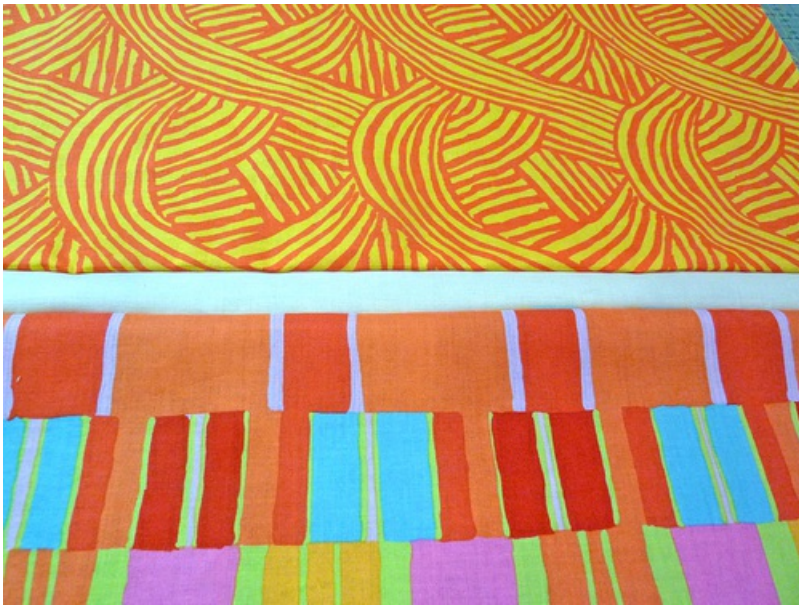
7. Pin the completed bottom row (E/D/E) to the bottom free edge of the sashing for the completed top row (B/C). Stitch in place.
8. Pin the remaining $1\frac{1}{2}$ " x $29\frac{1}{2}$ " sashing strip to the right hand side of the assembled block. Stitch in place.
9. Set aside the upper left section.

Upper Right Section

1. Collect the pieces that make up the upper right section: one Fabric A $19\frac{1}{2}$ " x $19\frac{1}{2}$ " square, one Fabric D $9\frac{1}{2}$ " x $19\frac{1}{2}$ " rectangle, and one $1\frac{1}{2}$ " x $19\frac{1}{2}$ " sashing strip.
2. Pin the $1\frac{1}{2}$ " x $19\frac{1}{2}$ " sashing strip to the bottom of the Fabric D $9\frac{1}{2}$ " x $19\frac{1}{2}$ " rectangle. Stitch in place.



3. Pin the Fabric A $19\frac{1}{2}$ " x $19\frac{1}{2}$ " square to the remaining raw edge of the sashing strip. Stitch in place.



Assemble Upper Left to Upper Right

1. Collect the two upper sections.
2. Pin right sides together along the inner raw edges: the right raw edge of the upper left section's sashing to the left raw edge of the upper right section. Stitch together to complete the full top section of the throw.
3. Collect two 1½" x 19½" sashing strips and two 1½" x 30" sashing strips. Break into two pairs of one 19½" strip and one 30" strip. Pin and stitch these two lengths together. Press open the seam allowance.



4. Pin one long sashing strip to the *bottom* edge of the completed full top section and one to the *top* edge of the completed full top section. Stitch in place.



5. Set aside the completed full top section.

Lower Left Section

1. Collect the pieces that make up the lower left section: one Fabric A $19\frac{1}{2}$ " x $19\frac{1}{2}$ " square, one Fabric C $9\frac{1}{2}$ " x $19\frac{1}{2}$ " rectangle, and two $1\frac{1}{2}$ " x $19\frac{1}{2}$ " sashing strips.
2. Pin the $1\frac{1}{2}$ " x $19\frac{1}{2}$ " sashing strip to the right hand side of the Fabric C $9\frac{1}{2}$ " x $19\frac{1}{2}$ " rectangle. Stitch in place.



3. Pin the Fabric A $19\frac{1}{2}$ " x $19\frac{1}{2}$ " square to the remaining raw edge of the sashing strip. Stitch in place.
4. Pin the remaining $1\frac{1}{2}$ " x $19\frac{1}{2}$ " sashing strip to the remaining raw edge of the Fabric A $19\frac{1}{2}$ " x $19\frac{1}{2}$ " square. Stitch in place.
5. Set aside the completed lower left section.

Lower Right Section

1. Collect the pieces that make up the lower right section: one Fabric C $9\frac{1}{2}$ " x $19\frac{1}{2}$ " rectangle, one Fabric D $9\frac{1}{2}$ " x $9\frac{1}{2}$ " square, one Fabric E $9\frac{1}{2}$ " x $9\frac{1}{2}$ " square, one $1\frac{1}{2}$ " x $19\frac{1}{2}$ " sashing strip, and one $1\frac{1}{2}$ " x $9\frac{1}{2}$ " sashing strip.
2. Pin the $1\frac{1}{2}$ " x $19\frac{1}{2}$ " sashing strip to the bottom of the Fabric C $9\frac{1}{2}$ " x $19\frac{1}{2}$ " rectangle. Stitch in place.
3. Similar to the upper left section, pin together the two $9\frac{1}{2}$ " x $9\frac{1}{2}$ " squares with a $1\frac{1}{2}$ " x $9\frac{1}{2}$ " sashing strip in between: D/sashing/E.
4. Pin the completed bottom row (D/E) to the bottom free edge of the Fabric C sashing. Stitch in place.



Assemble Lower Left to Lower Right

1. Collect the two lower sections.
2. Pin right sides together along the inner raw edges: the right raw edge of the lower left section's sashing to the left raw edge of the lower right section. Stitch together to complete the full lower section of the throw.



3. Similarly to what you did with the top section, collect one 1½" x 19½" sashing strip and one 1½" x 30" sashing strip. Pin and stitch these two lengths together. Press open the seam allowance.
4. Pin this new long sashing strip to the bottom edge of the completed full bottom section. Stitch in place.

Assemble completed top section to completed bottom section

1. Pin the top and bottom sections right sides together along the inner raw edges: the bottom raw edge of the top section's sashing to the upper raw edge of the bottom section. Stitch together to complete the main center section of the throw.

Add the final top and bottom border strips

1. Find the two Fabric A 5½" x 49½" top and bottom strips, which you pieced and trimmed to length above.
2. Pin one to the top of the assembled center section and one to the bottom of the assembled center section. In both cases, you are pinning to the remaining raw edge of the sashing. Stitch in place.



3. Press the completed top from both the front and the back, making sure all the seam allowances are pressed towards the sashing on the back.

Layer and quilt top to batting

1. Place the batting flat on your work surface. Most people simply use the floor for this step; just make sure it's clean.
2. Place the completed top right side up on the batting. Make sure the top is centered on the batting. There should be plenty of excess batting around all four sides.
3. Pin or baste the layers. Many quilters use large safety pins to baste their quilts. Another option is to thread baste with needle and thread. And a third option is to use a temporary basting spray. The option chosen for this throw was to simply pin baste through the two layers. On this project, it is most critical to keep the layers flat along the sashing.



4. Re-thread the machine with the contrasting quilting thread in the top and bobbin.
5. Set up your machine with a Walking foot or similar and lengthen the stitch.
6. Topstitch along each side of every sashing strip.



7. Stop and lock the seam at the intersections; do not cross the topstitching. If your machine has a lock stitch function, this makes the neatest finish. If you do not have this feature, leave your thread tails long, then pull them through and knot to secure at the back.



8. When all the topstitching is complete, you still have that excess batting.



9. Trim the batting flush with the top on all four sides.



Add sherpa strips and backing and tie to finish

1. Pin the 2" x 64½" sherpa strips right sides together along each side of the throw. Stitch in place, still using a ¼" seam allowance.



2. Pin the 2" x 52½" sherpa strips right sides together along the top and the bottom of the throw. Stitch in place.



3. Place the 52½" x 64½" sherpa backing panel right side up on your flat work surface (probably still that nice, clean floor).
4. Place the throw top, with all four sherpa trim strips stitched in place, right side down on top of the backing. Make sure all four sides are flush.
5. Pin in place around all four sides, leaving an approximate 10" opening along one side for turning.



6. Using a ¼" seam allowance, stitch around all four sides, pivoting at the corners and locking your seam at either side of the 10" opening.



7. Clip the corners and turn right side out through the opening. Reach in through the opening to gently push out each corner so it is as sharp as possible. Press flat from the top; *avoid pressing the sherpa*.
8. Hand stitch the opening closed with tiny stitches, which will hide nicely within the nap of the sherpa.



9. Thread the larger needle with a full strand of embroidery floss. Do not knot the end.
10. Thread the floss through all the layers at each intersection, inserting from the front (leaving a tail), through to the back, and then returning again to the front. Trim to an overall length of approximately 2".



11. Tie the tails into a double knot. The knot should be snug against the surface of the fabric.
12. Repeat at each intersection.
13. Use a lint roller to remove the fluff left behind from the sherpa.

Contributors

Project Design: Alicia Thommas

Sample Creation and Instructional Outline: Debbie Guild

Tags:

- [Rowan & FreeSpirit](#)

[Bed Linens](#)

[Voile Infinity Scarf](#)

[A Romantic Bedroom Retreat with Rowan & FreeSpirit Fabrics: Table Top Storage: 2 Vanity Boxes & 1 Makeup Brush Cup](#)

[A Romantic Bedroom Retreat with Rowan & FreeSpirit Fabrics: Bows & Ruffles Vanity Chair Cushion](#)

[A Romantic Bedroom Retreat with Rowan & FreeSpirit Fabrics: Vanity Table Voile Skirt and Laminate Top](#)

[A Romantic Bedroom Retreat with Rowan & FreeSpirit Fabrics: Three Toss Pillows](#)

[A Romantic Bedroom Retreat with Rowan & FreeSpirit Fabrics: Pillow Jacket](#)

[A Romantic Bedroom Retreat with Rowan & FreeSpirit Fabrics: Quilted and Fringed Coverlet](#)

[A Romantic Bedroom Retreat with Rowan & FreeSpirit Fabrics: Double Flange Pillow Shams](#)

[A Romantic Bedroom Retreat with Rowan & FreeSpirit Fabrics: Elegant Knotted Bolster Pillow](#)

[A Romantic Bedroom Retreat with Rowan & FreeSpirit Fabrics: How to Mix and Match Designer Fabric Collections](#)

[A Romantic Bedroom Retreat with Rowan & FreeSpirit Fabrics: Layered Bed Curtain Backdrop with Velvet Valance](#)

This project and patterns (if any) may be downloaded for personal use only. No electronic or printed reproduction permitted without the prior written consent of Sew4Home LLC.

Copyright 2009-2019 Sew4Home LLC. All Rights Reserved.

Source URL: <https://sew4home.com/projects/bed-linens/hand-tied-patchwork-sherpa-throw-artisan-kaffe-fassett>