



**KAFFE
FASSETT
COLLECTIVE**
for

Free Spirit 

Delivering August 2021
65 Skus



Flower Net PWBM081.RED

Repeat: 12"W x 12"H



Climbing Geraniums PWPJ110.RED

Inset shown at full width of fabric.

Repeat: Full Width x 16"H

This presentation is a fair representation of design, scale and color of each fabric. The final fabrics may have very minimal changes.



Tickle My Fancy PWBM080.RED



Inset shown at full width of fabric.

Repeat: 32"W x 16"H

HARMONIZING SHOT COTTONS



SCGP101.PAPRIKA



SCGP109.CAMELIA



SCGP110.BLOODORANGE

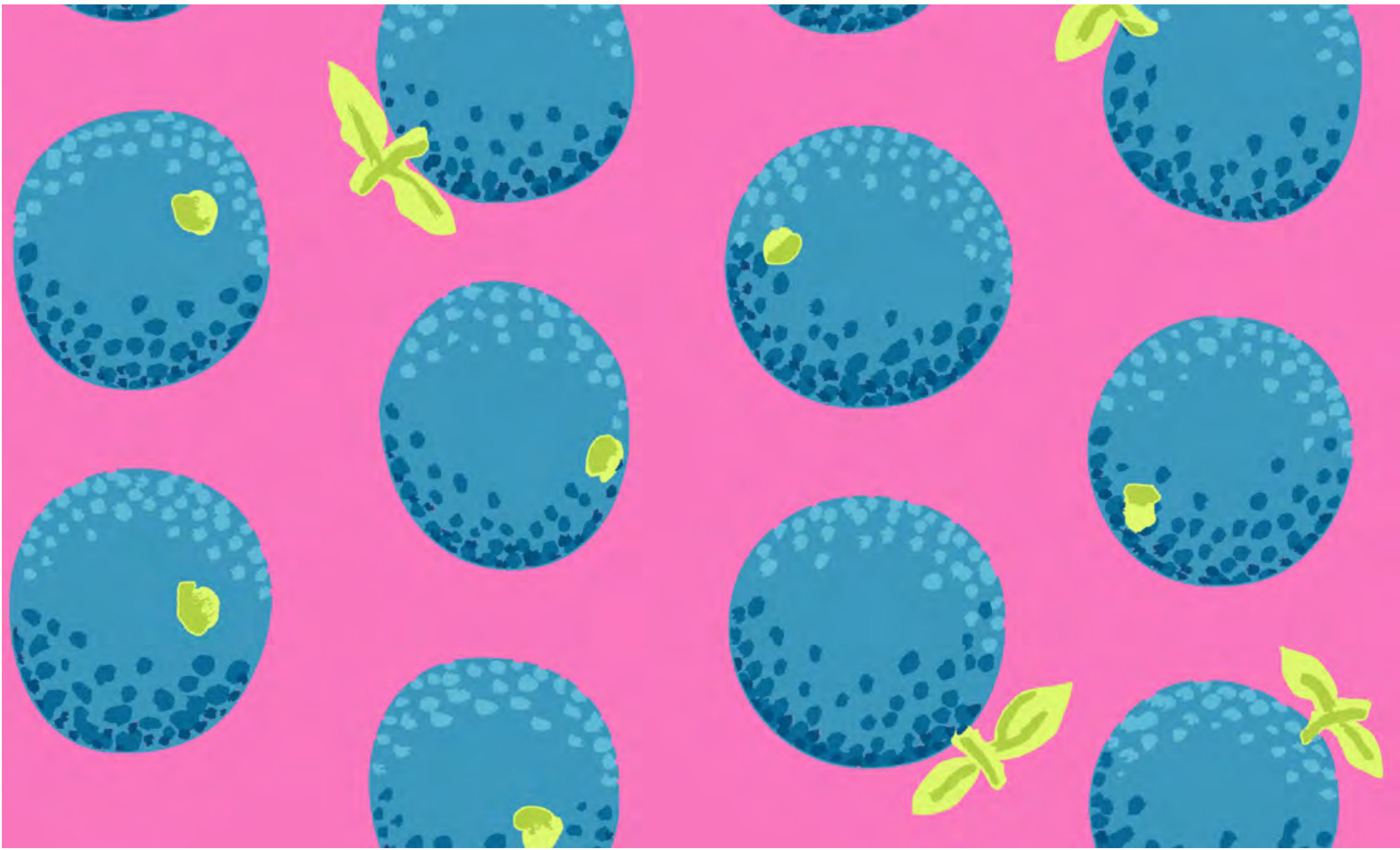


SCGP103.WINE



SCGP119.PLUM

This presentation is a fair representation of design, scale and color of each fabric. The final fabrics may have very minimal changes.



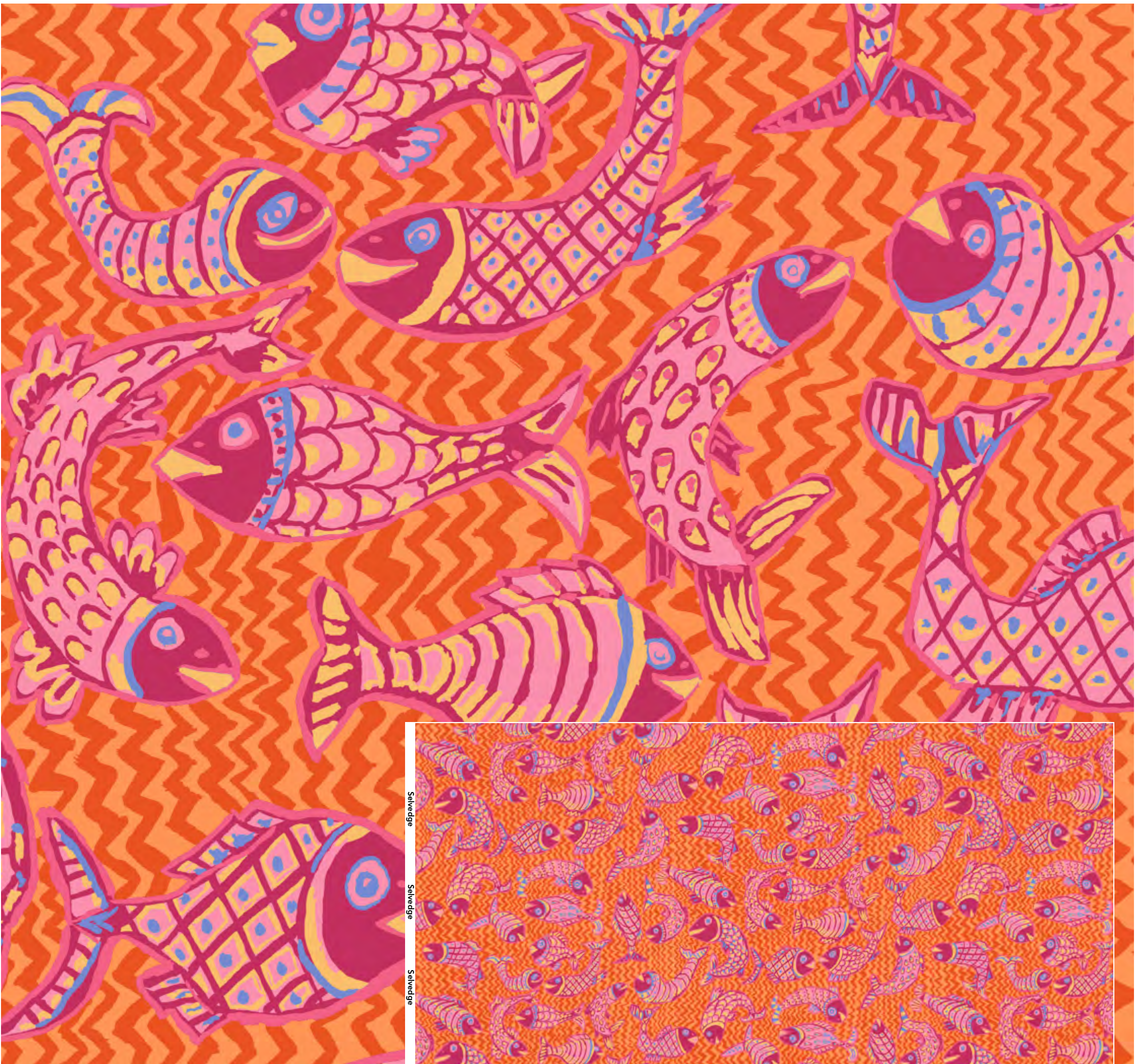
Oranges PWGP177.PINK

Repeat: 12"W x 12"H



Flower Net PWBM081.BLUE

Repeat: 12"W x 12"H



Koi Polloi PWBM079.ORANGE

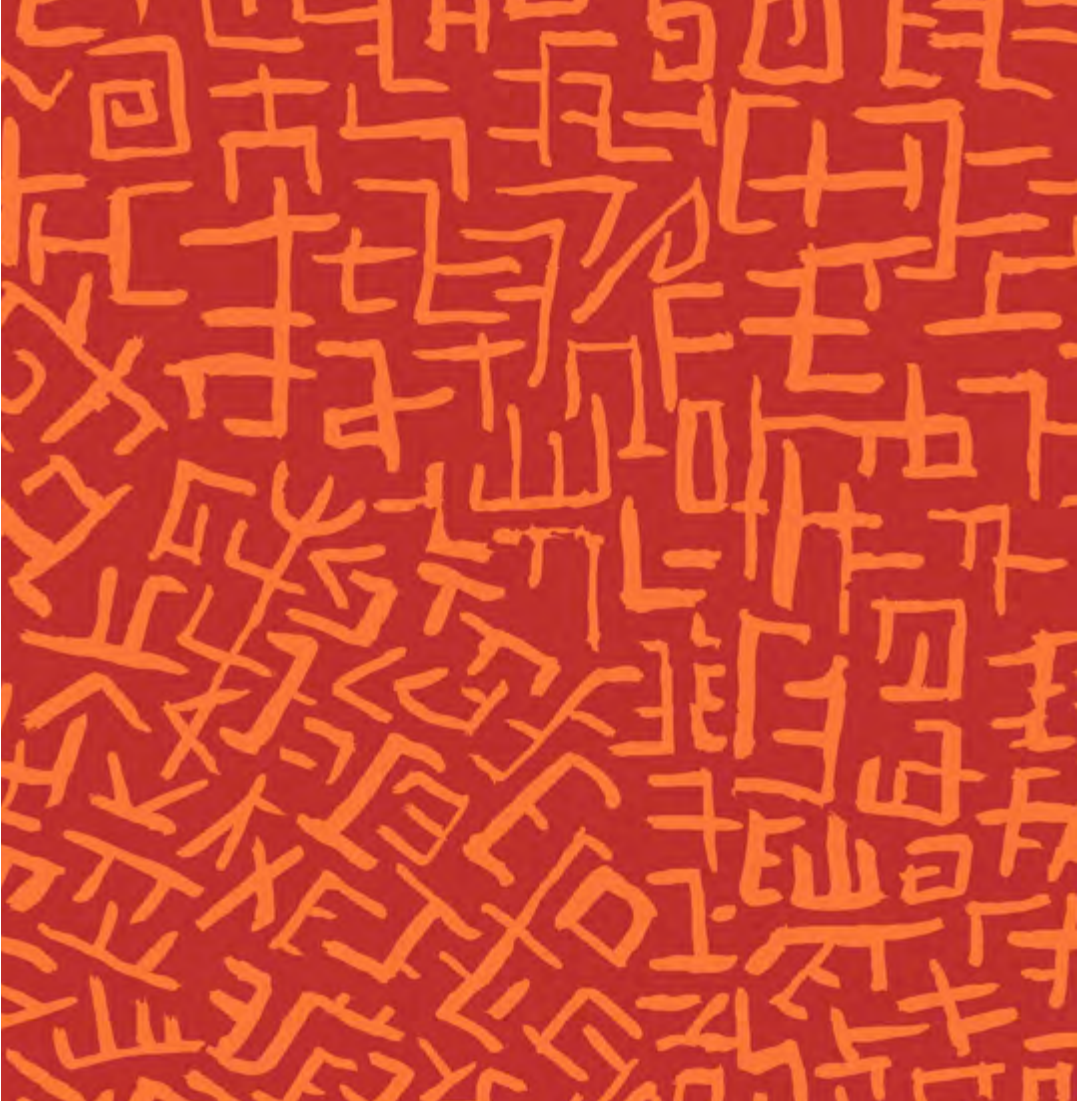
Inset shown at full width of fabric.

Repeat: 32"W x 16"H



Amaze PWBM078.PINK

Repeat: 8"W x 8"H



Amaze PWBM078.RED

Repeat: 8"W x 8"H

This presentation is a fair representation of design, scale and color of each fabric. The final fabrics may have very minimal changes.



Koi Polloi PWBM079.GREEN

Repeat: 32"W x 16"H



Caladiums PWPJ108.RED

Inset shown at full width of fabric.

Repeat: 28"W x 24"H

This presentation is a fair representation of design, scale and color of each fabric. The final fabrics may have very minimal changes.



Van Gogh PWPJ111.RED

Inset shown at full width of fabric.

Repeat: 42"W x 24"H



Hokusai's Mums PWPJ107.COOL

Inset shown at full width of fabric.

Repeat: 30"W x 24"H

This presentation is a fair representation of design, scale and color of each fabric. The final fabrics may have very minimal changes.



Cloisonne PWGP046.PURPLE

Inset shown at full width of fabric.

Repeat: 17.5"W x 24"H

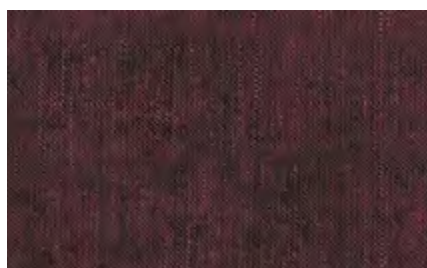
HARMONIZING SHOT COTTONS



SCGP109.CAMELIA



SCGP103.WINE



SCGP119.PLUM



SCGP113.LUPIN



SCGP117.AUBERGINE

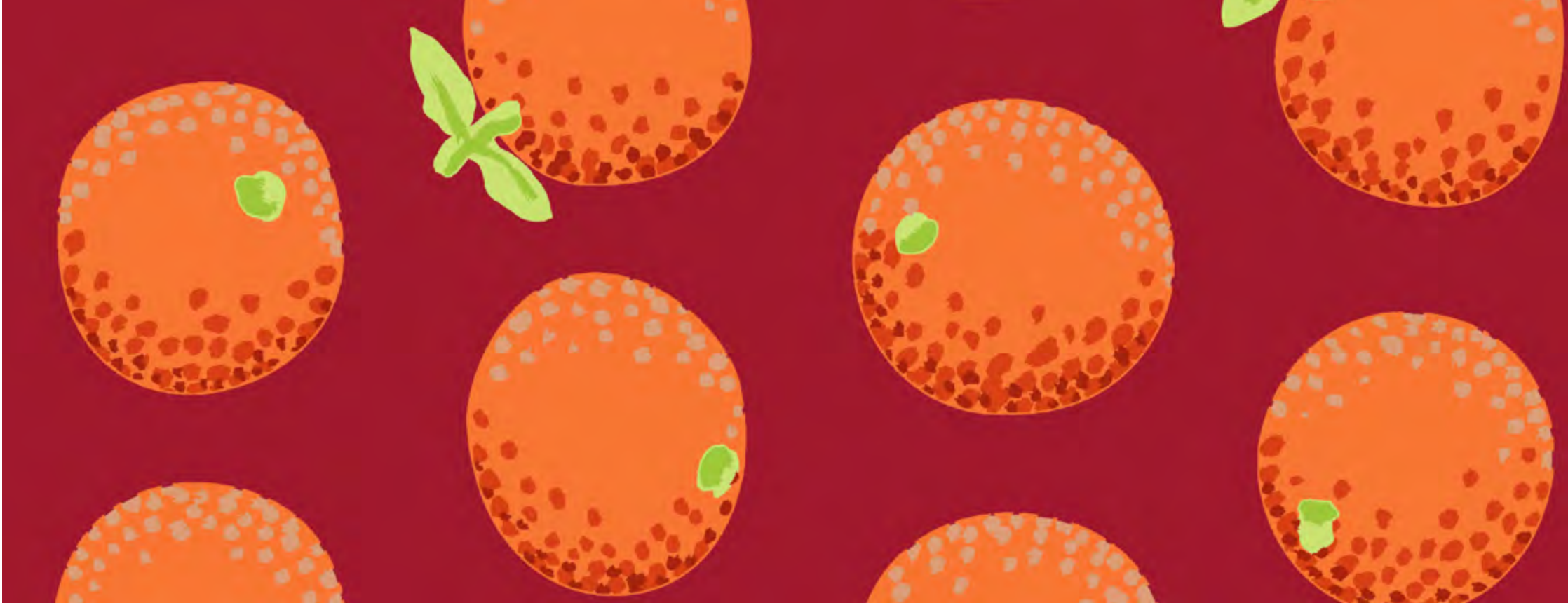
This presentation is a fair representation of design, scale and color of each fabric. The final fabrics may have very minimal changes.



Hokusai's Mums PWPJ107.DARK

Inset shown at full width of fabric.

Repeat: 30"W x 24"H



Oranges PWGP177.MAROON

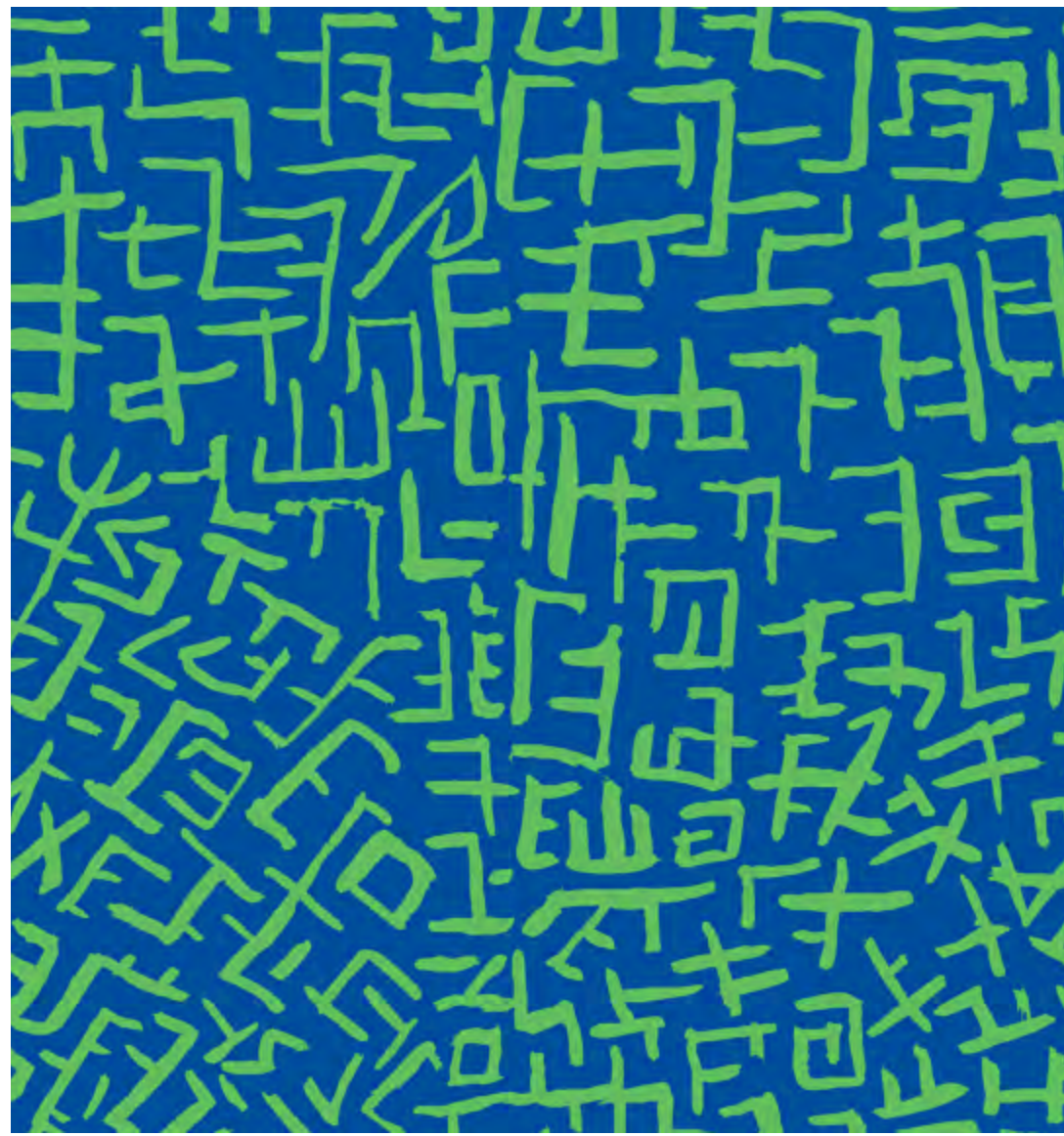
Repeat: 12"W x 12"H

This presentation is a fair representation of design, scale and color of each fabric. The final fabrics may have very minimal changes.



Lucy PWPJ112.PINK

Repeat: 30"W x 12"H



Amaze PWBM078.BLUE

Repeat: 8"W x 8"H



Embroidered Flower PWGP185.GREEN

Inset shown at full width of fabric.

Repeat: 16"W x 16"H

This presentation is a fair representation of design, scale and color of each fabric. The final fabrics may have very minimal changes.

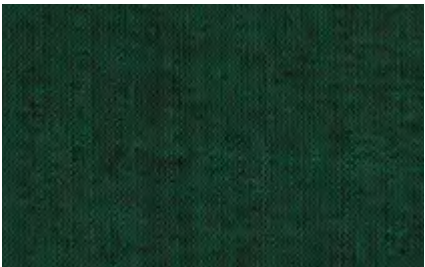


Hokusai's Mums PWPJ107.NATURAL

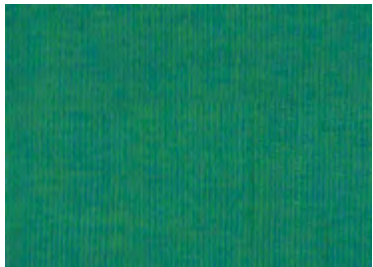
Inset shown at full width of fabric.

Repeat: 30"W x 24"H

HARMONIZING SHOT COTTONS



SCGP118.PESTO



SCGP111.PISTACHIO



SCGP105.TEAL



SCGP110.BLOODORANGE



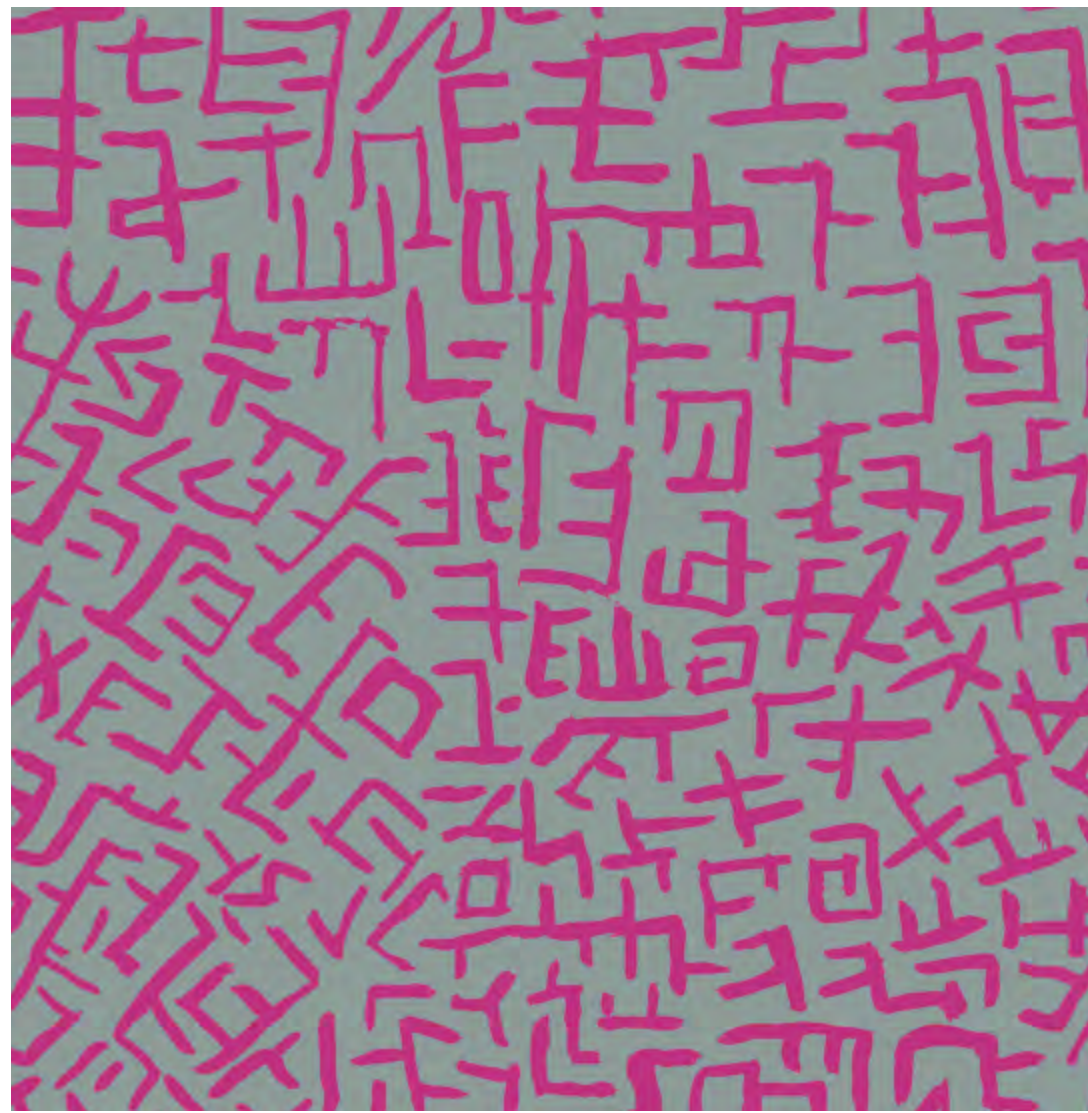
SCGP109.CAMELIA

This presentation is a fair representation of design, scale and color of each fabric. The final fabrics may have very minimal changes.



Lucy PWPJ112.MAGENTA

Repeat: 30"W x 12"H



Amaze PWBM078.GREY

Repeat: 8"W x 8"H



Dorothy PWPJ109.RED



Inset shown at full width of fabric.

Repeat: 28"W x 24"H

This presentation is a fair representation of design, scale and color of each fabric. The final fabrics may have very minimal changes.



Caladiums PWPJ108.BRIGHT

Inset shown at full width of fabric.

Repeat: 28"W x 24"H



Climbing Geraniums PWPJ110.GREEN

Repeat: Full Width x 16"H

This presentation is a fair representation of design, scale and color of each fabric. The final fabrics may have very minimal changes.



Caladiums PWPJ108.BLUE

Inset shown at full width of fabric.

Repeat: 28"W x 24"H

HARMONIZING SHOT COTTONS



SCGP106.HELIOTROPE



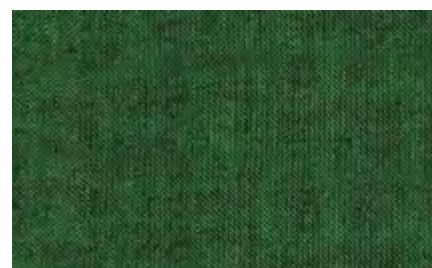
SCGP114.OPAL



SCGP105.TEAL



SCGP111.PISTACHIO



SCGP120.PINE

This presentation is a fair representation of design, scale and color of each fabric. The final fabrics may have very minimal changes.



Dorothy PWPJ109.NATURAL

Inset shown at full width of fabric.

Repeat: 28"W x 24"H



Climbing Geraniums PWPJ110.DUCKEGG

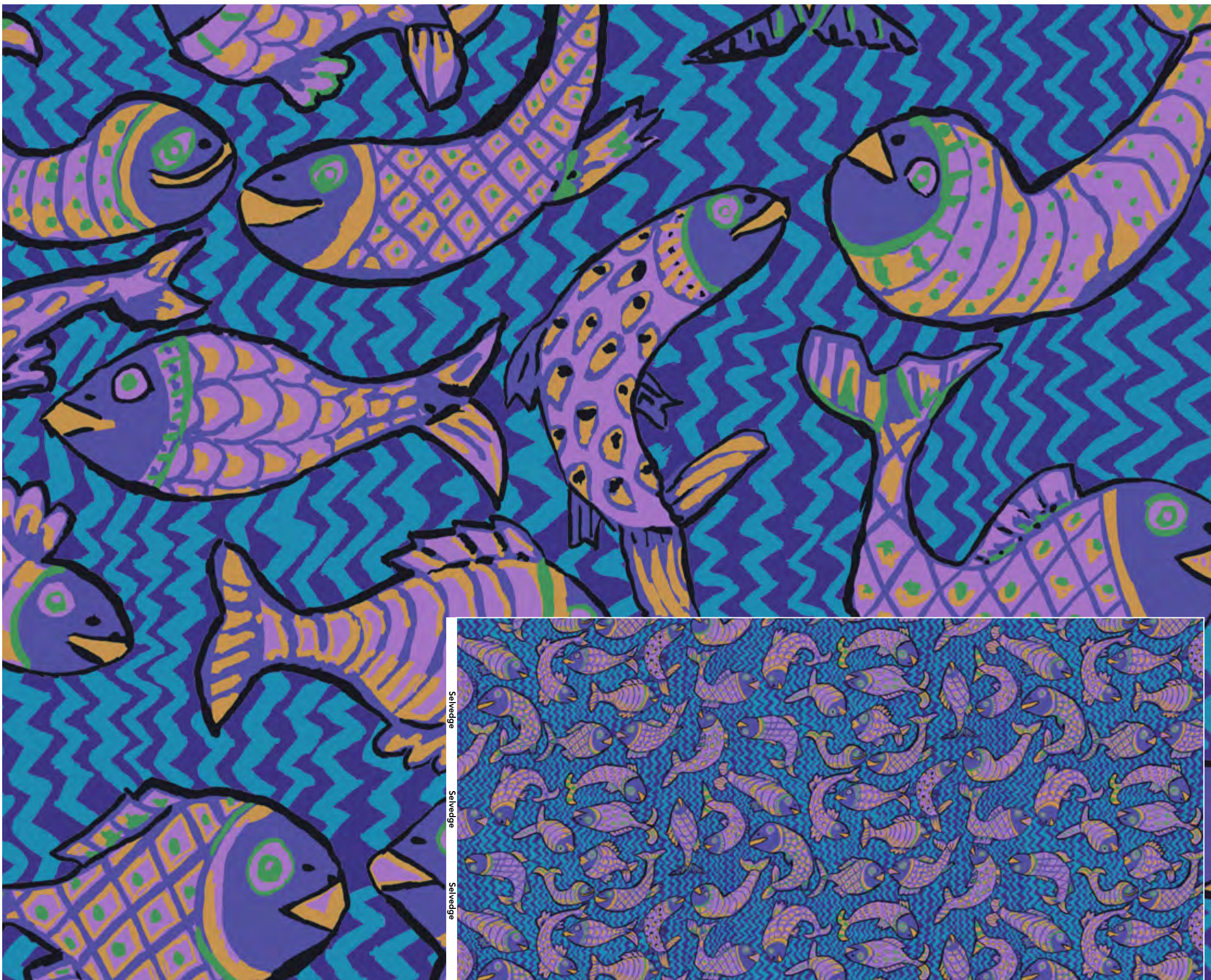
Repeat: Full Width x 16"H

This presentation is a fair representation of design, scale and color of each fabric. The final fabrics may have very minimal changes.



Flower Net PWBM081.GREEN

Repeat: 12"W x 12"H



Koi Polloi PWBM079.BLUE

Inset shown at full width of fabric.

Repeat: 32"W x 16"H

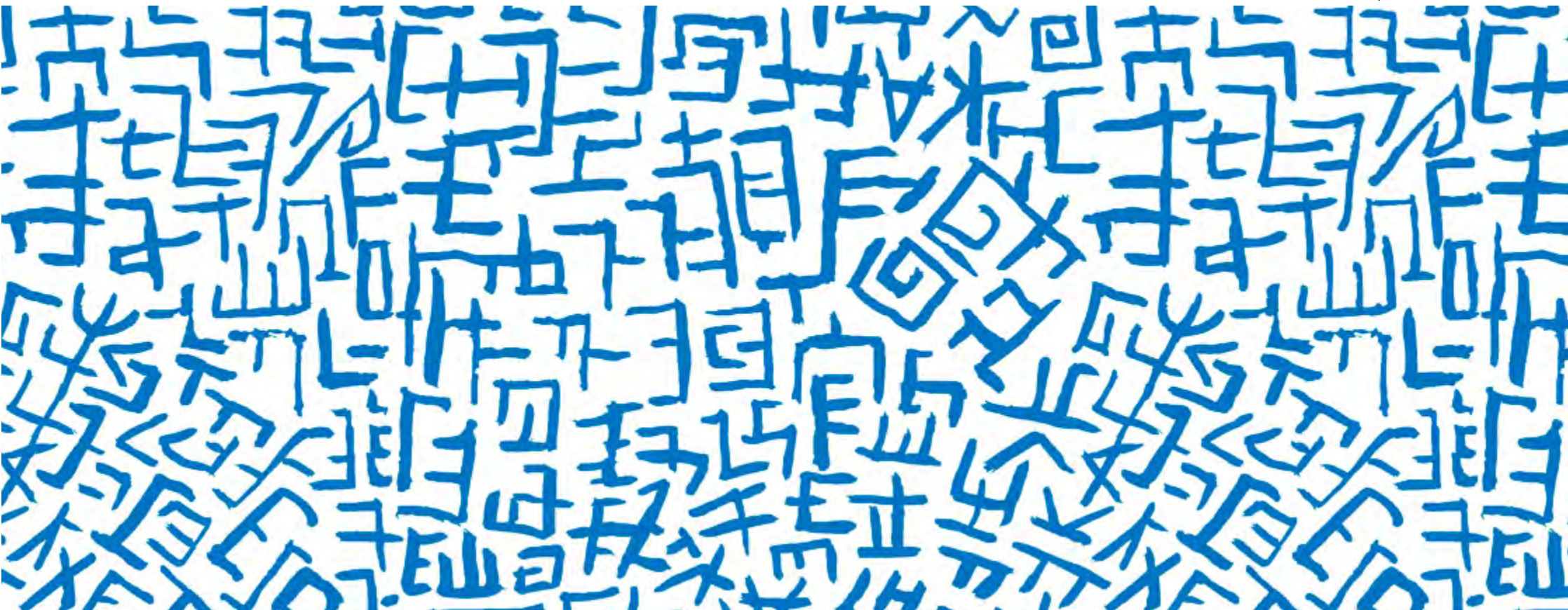
This presentation is a fair representation of design, scale and color of each fabric. The final fabrics may have very minimal changes.



Dorothy PWPJ109.BLUE

Inset shown at full width of fabric.

Repeat: 28"W x 24"H



Amaze PWBM078.DELFT

Repeat: 8"W x 8"H

This presentation is a fair representation of design, scale and color of each fabric. The final fabrics may have very minimal changes.



Koi Polloi PWBM079.DELFT

Repeat: 32"W x 16"H



Hokusai's Mums PWPJ107.GREY

Inset shown at full width of fabric.

Repeat: 30"W x 24"H

This presentation is a fair representation of design, scale and color of each fabric. The final fabrics may have very minimal changes.



Caladiums PWPJ108.PASTEL

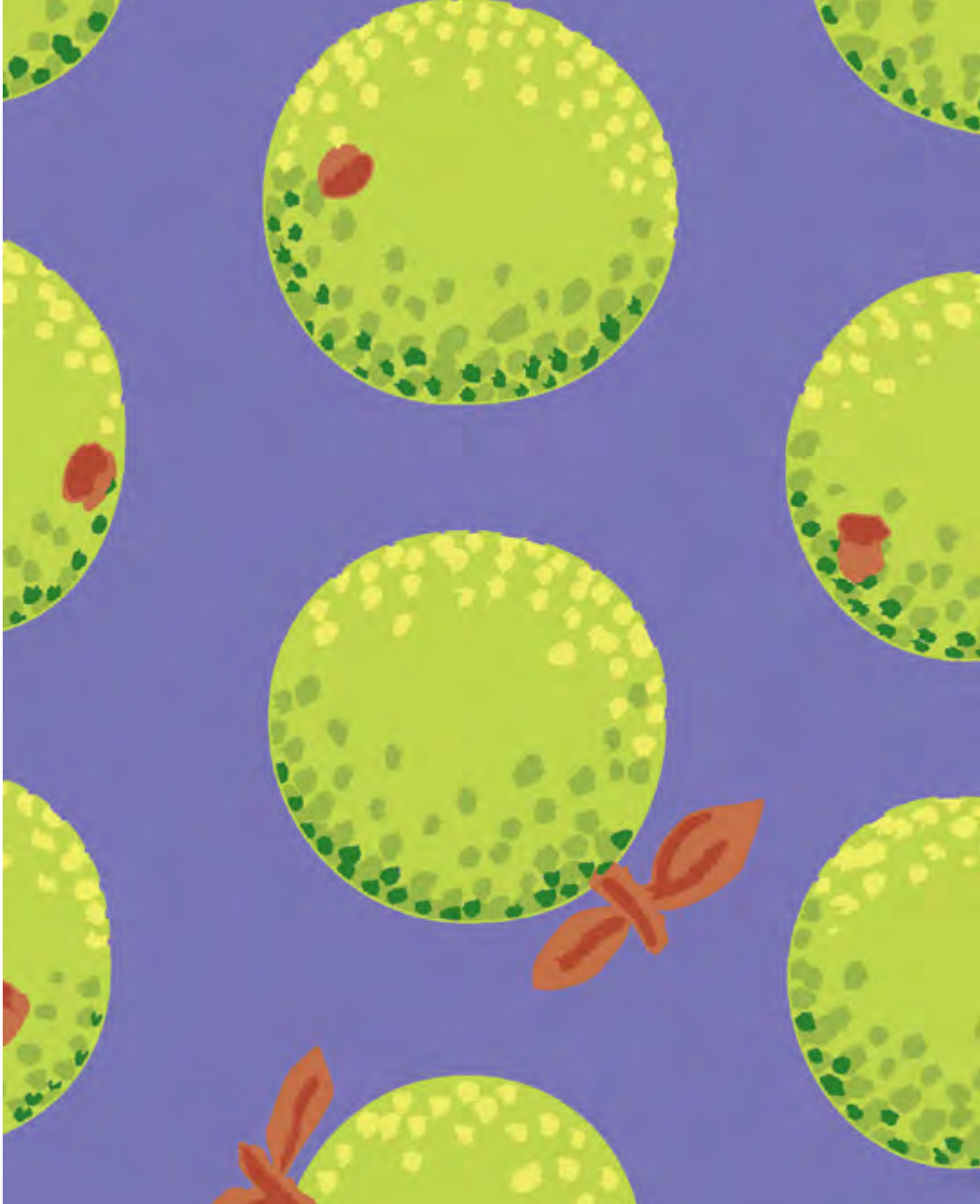
Inset shown at full width of fabric.

Repeat: 28"W x 24"H



Lucy PWPJ112.LAVENDER

Repeat: 30"W x 12"H



Oranges PWGP177.LAVENDER

Repeat: 12"W x 12"H

This presentation is a fair representation of design, scale and color of each fabric. The final fabrics may have very minimal changes.



Flower Net PWBM081.GREY

Repeat: 12"W x 12"H



Van Gogh PWPJ111.BLUE

Inset shown at full width of fabric.

Repeat: 42"W x 24"H

This presentation is a fair representation of design, scale and color of each fabric. The final fabrics may have very minimal changes.



Embroidered Flower PWGP185.CONTRAST

Inset shown at full width of fabric.

Repeat: 16"W x 16"H

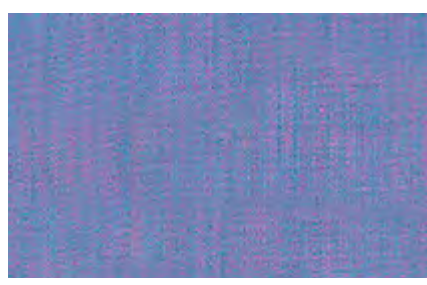
HARMONIZING SHOT COTTONS



SCGP106.HELIOTROPE



SCGP104.AIRFORCE



SCGP114.OPAL

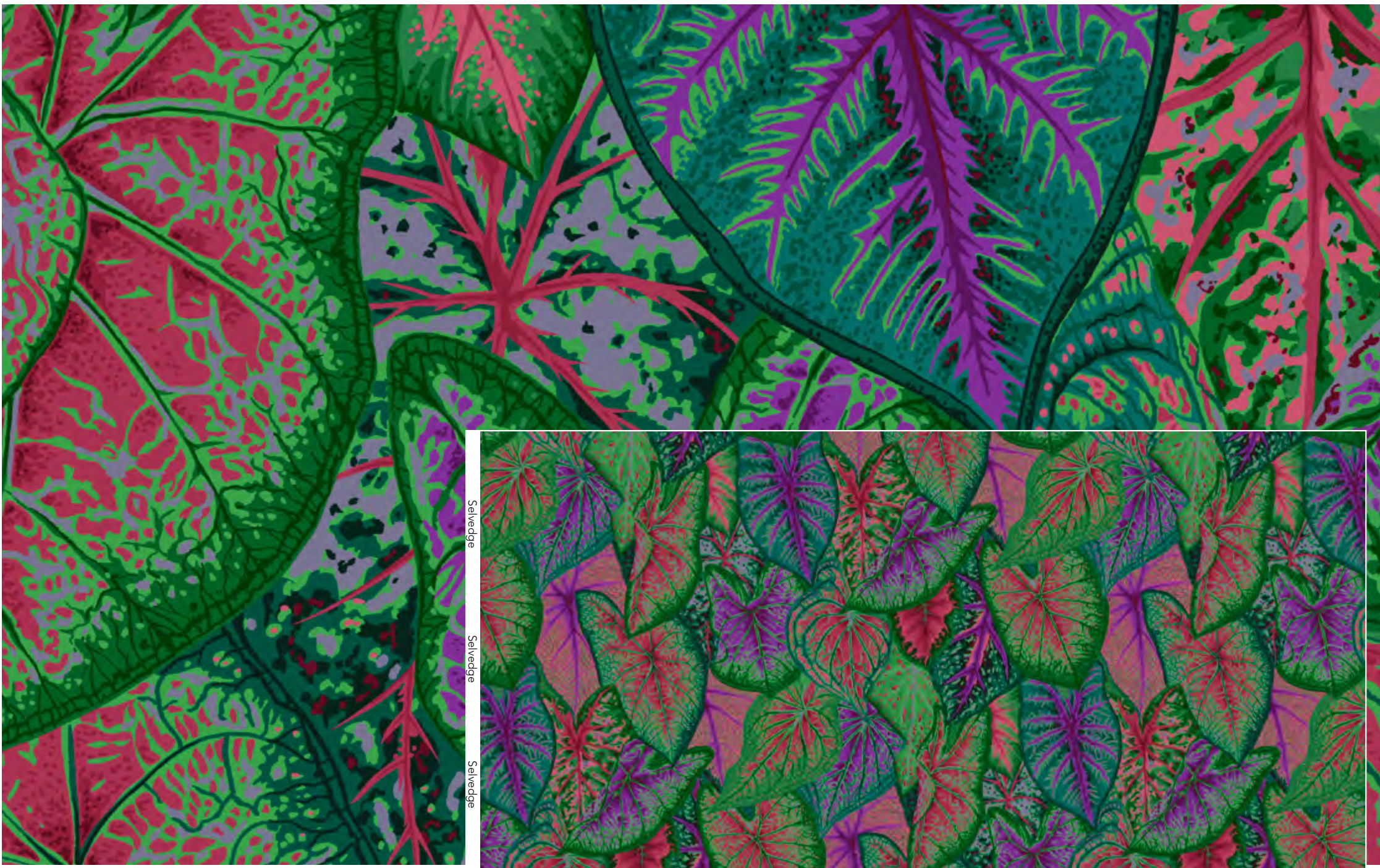


SCGP105.TEAL



SCGP120.PINE

This presentation is a fair representation of design, scale and color of each fabric. The final fabrics may have very minimal changes.



Caladiums PWPJ108.DARK

Inset shown at full width of fabric.

Repeat: 28"W x 24"H



Dorothy PWPJ109.BROWN

Inset shown at full width of fabric.

Repeat: 28"W x 24"H

This presentation is a fair representation of design, scale and color of each fabric. The final fabrics may have very minimal changes.



Van Gogh PWPJ111.GREEN

Inset shown at full width of fabric.

Repeat: 42"W x 24"H



Hokusai's Mums PWPJ107.GREEN

Inset shown at full width of fabric.

Repeat: 30"W x 24"H

This presentation is a fair representation of design, scale and color of each fabric. The final fabrics may have very minimal changes.



Cloisonne PWGP046.BLUE

Inset shown at full width of fabric.

Repeat: 17.5"W x 24"H



Van Gogh PWPJ111.DARK

Inset shown at full width of fabric.

Repeat: 42"W x 24"H

This presentation is a fair representation of design, scale and color of each fabric. The final fabrics may have very minimal changes.



Embroidered Flower PWGP185.PURPLE

Inset shown at full width of fabric.

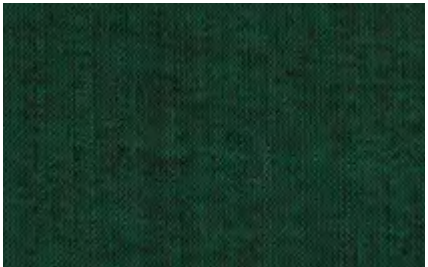
Repeat: 16"W x 16"H



Climbing Geraniums PWPJ110.PURPLE

Repeat: Full Width x 16"H

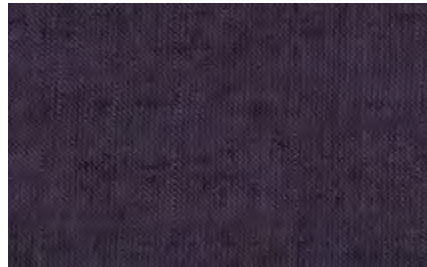
HARMONIZING SHOT COTTONS



SCGP118.PESTO



SCGP104.AIRFORCE



SCGP117.AUBERGINE



SCGP113.LUPIN



SCGP103.WINE

This presentation is a fair representation of design, scale and color of each fabric. The final fabrics may have very minimal changes.



Oranges PWGP177.CONTRAST

Repeat: 12"W x 12"H



Flower Net PWBM081.BLACK

Repeat: 12"W x 12"H



Dorothy PWPJ109.CONTRAST

Inset shown at full width of fabric.

Repeat: 28"W x 24"H



Tickle My Fancy PWBM080.GREY

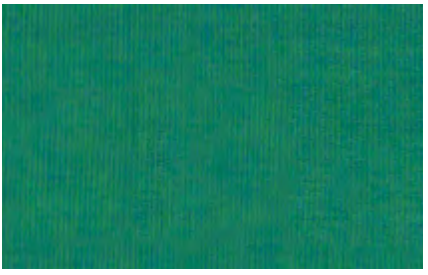
Repeat: 32"W x 16"H



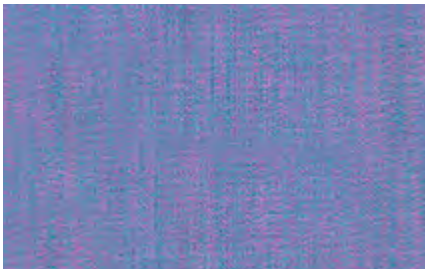
Climbing Geraniums PWPJ110.BLACK

Repeat: Full Width x 16"H

HARMONIZING SHOT COTTONS



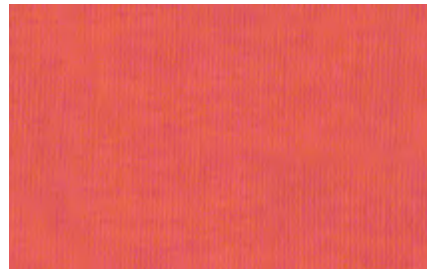
SCGP111.PISTACHIO



SCGP114.OPAL



SCGP113.LUPIN



SCGP109.CAMELIA



SCGP112.SUNFLOWER

This presentation is a fair representation of design, scale and color of each fabric. The final fabrics may have very minimal changes.



Lucy PWPJ112.GREY

Repeat: 30"W x 12"H



Cloisone PWGP046.CONTRAST

Inset shown at full width of fabric.

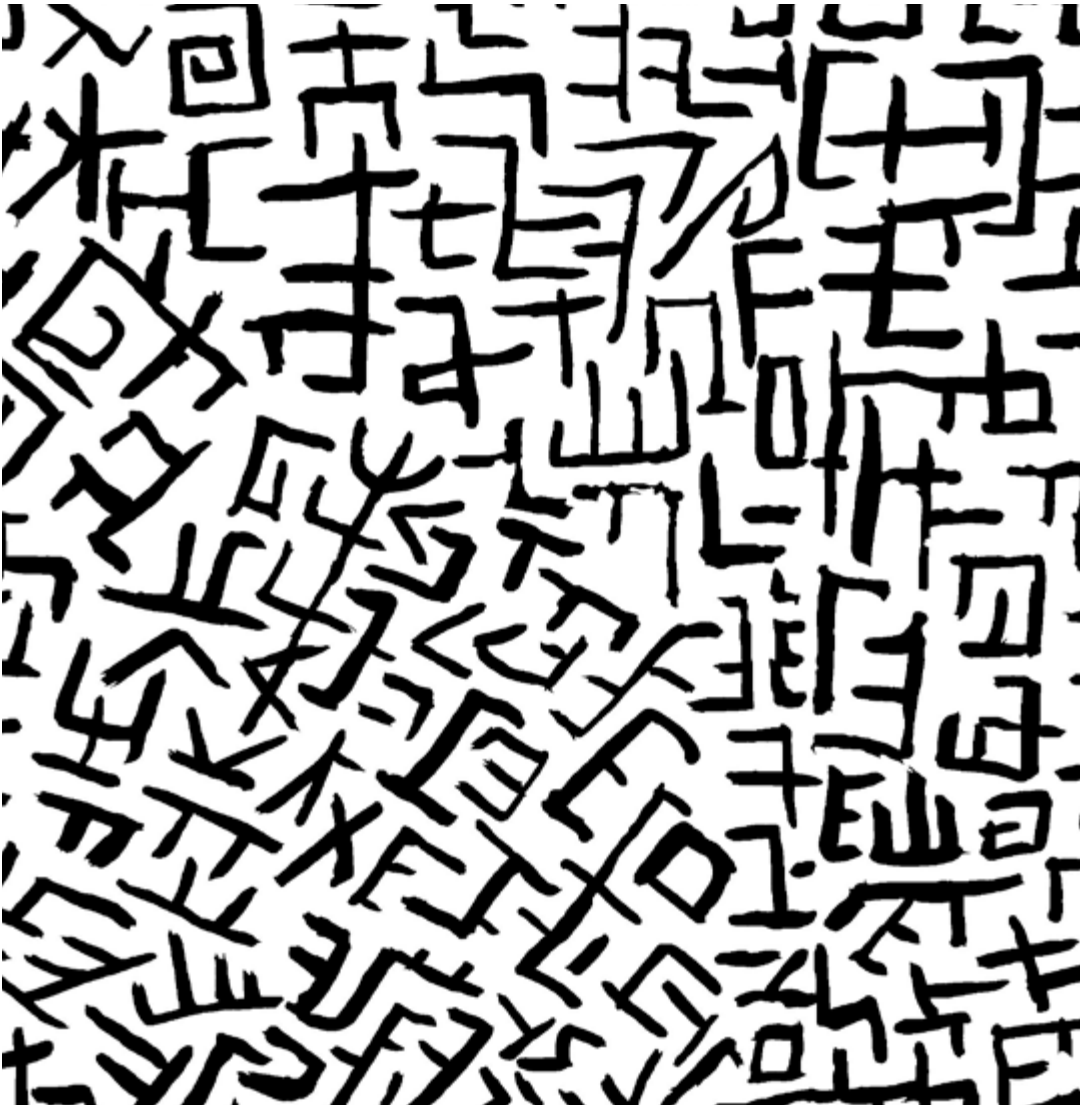
Repeat: 17.5"W x 24"H

This presentation is a fair representation of design, scale and color of each fabric. The final fabrics may have very minimal changes.



Tickle My Fancy PWBM080.BLACK

Repeat: 32"W x 16"H



Amaze PWBM078.WHITE

Repeat: 8"W x 8"H



Amaze PWBM078.BLACK

Repeat: 8"W x 8"H

This presentation is a fair representation of design, scale and color of each fabric. The final fabrics may have very minimal changes.

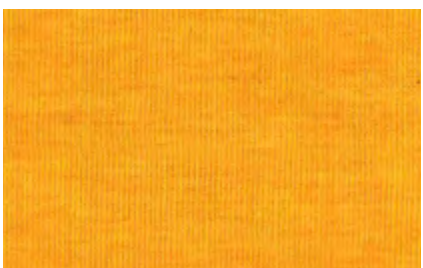


Van Gogh PWPJ111.BRIGHT

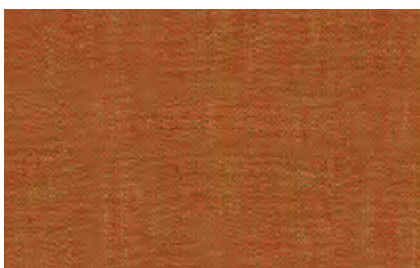
Inset shown at full width of fabric.

Repeat: 42"W x 24"H

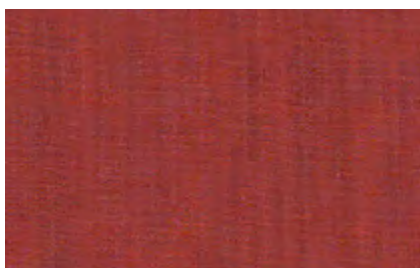
HARMONIZING SHOT COTTONS



SCGP112.SUNFLOWER



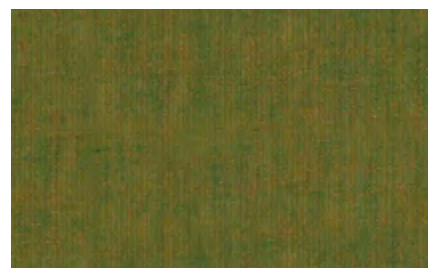
SCGP101.PAPRIKA



SCGP110.BLOODORANGE



SCGP113.LUPIN



SCGP107.KHAKI

This presentation is a fair representation of design, scale and color of each fabric. The final fabrics may have very minimal changes.



Caladiums PWPJ108.GOLD



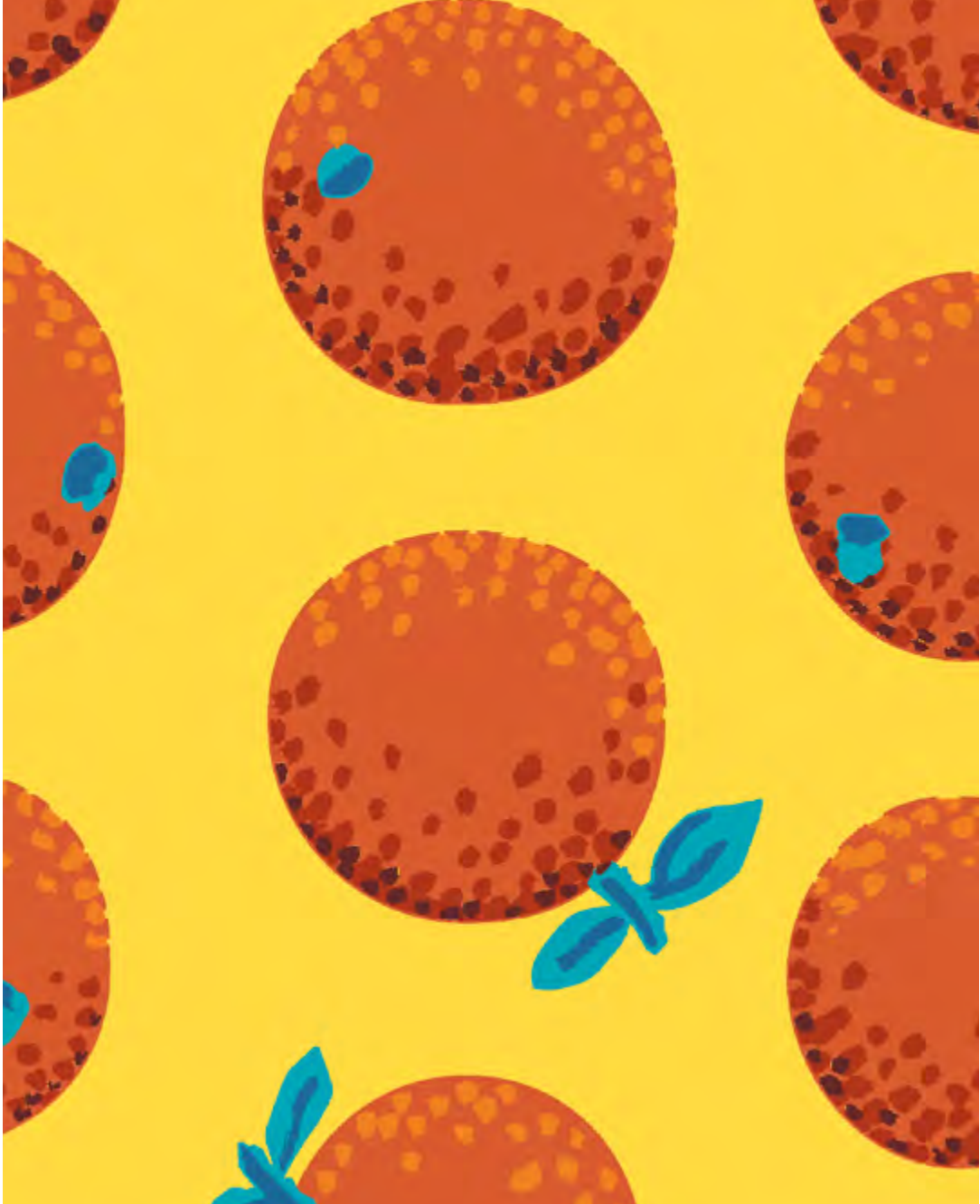
Inset shown at full width of fabric.

Repeat: 28"W x 24"H



Lucy PWPJ112.ORANGE

Repeat: 30"W x 12"H



Oranges PWGP177.CITRUS

Repeat: 12"W x 12"H

This presentation is a fair representation of design, scale and color of each fabric. The final fabrics may have very minimal changes.



Tickle My Fancy PWBM080.ORANGE

Repeat: 32"W x 16"H



Hokusai's Mums PWPJ107.HOT

Inset shown at full width of fabric.

Repeat: 30"W x 24"H

This presentation is a fair representation of design, scale and color of each fabric. The final fabrics may have very minimal changes.



Cloisonne PWGP046.ORANGE



Inset shown at full width of fabric.

Repeat: 17.5"W x 24"H



Koi Polloi PWBM079.YELLOW

Repeat: 32"W x 16"H

This presentation is a fair representation of design, scale and color of each fabric. The final fabrics may have very minimal changes.

Kaffe Fassett Collective August 2021 Pre-Cuts

featuring Kaffe Fassett, Brandon Mably & Philip Jacobs



Bright Colorway



Dark Colorway



Contrast Fat Quarter



Contrast Fat Quarter:
 8 Pieces | Min 4
FB4FQGP.A2021CONTRAST

Fat Quarter:
 20 Pieces | Min 2
FB2FQGP.A2021BRIGHT
FB2FQGP.A2021DARK

Design Roll
 40 Pieces | Min 4
FB4DRGP.A2021BRIGHT
FB4DRGP.A2021DARK

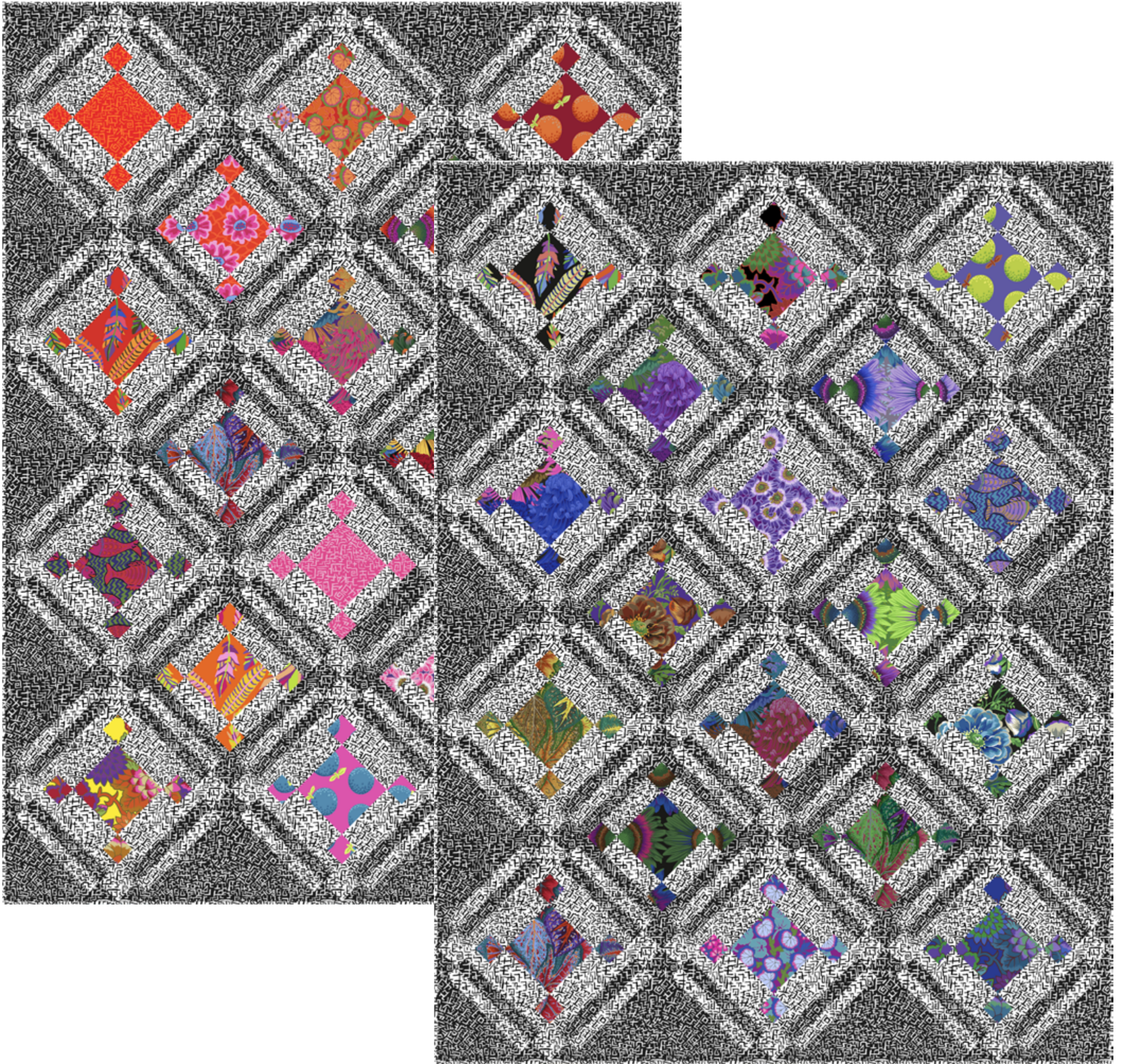
5" Charm Pack
 42 Pieces | Min 6
FB6CPGP.A2021BRIGHT
FB6CPGP.A2021DARK

10" Charm Pack
 42 Pieces | Min 6
FB610GP.A2021BRIGHT
FB610GP.A2021DARK

6" Design Strip
 20 Pieces | Min 4
FB4DSGP.A2021BRIGHT
FB4DSGP.A2021DARK

Juxtaposition Quilts

10" Charm Friendly



Designed by Tammy Silvers of Tamarinis
 Finished Size: 53 1/2" x 71" (1.35m x 1.80m)
 Technique: Strip Pieced
 Pattern available for purchase at tamarinis.com

Juxtaposition Bright (Left) Quilt Ordering Guide

SKU	Yards	Meters	12 Kits	24 Kits
FB610GPA2021BRIGHT - 10" Charm Pack	(2) 10" Charm Packs			
PWBM078.BLACK	2 yards	1.83m	2 bolts	4 bolts
PWBM078.WHITE*	2 1/2 yards	2.29m	2 bolts	4 bolts

Backing Fabric Options

PWBM080.BLACK - 44" Width	5 1/2 yards	5.03m	5 bolts	9 bolts
QBBM001.BLACK - 108"Width+	2 yards	1.83m	2 bolts	4 bolts

* Indicates Binding Fabric

+108" Width fabric is on 12yd Bolts

All fabric quantities are based on 15yd Bolts unless otherwise indicated.

Juxtaposition Dark (Right) Quilt Ordering Guide

SKU	Yards	Meters	12 Kits	24 Kits
FB610GPA2021DARK - 10" Charm Pack	(2) 10" Charm Packs			
PWBM078.BLACK	2 yards	1.83m	2 bolts	4 bolts
PWBM078.WHITE*	2 1/2 yards	2.29m	2 bolts	4 bolts

Backing Fabric Options

PWBM080.BLACK - 44" Width	5 1/2 yards	5.03m	5 bolts	9 bolts
QBBM001.BLACK - 108"Width+	2 yards	1.83m	2 bolts	4 bolts

* Indicates Binding Fabric

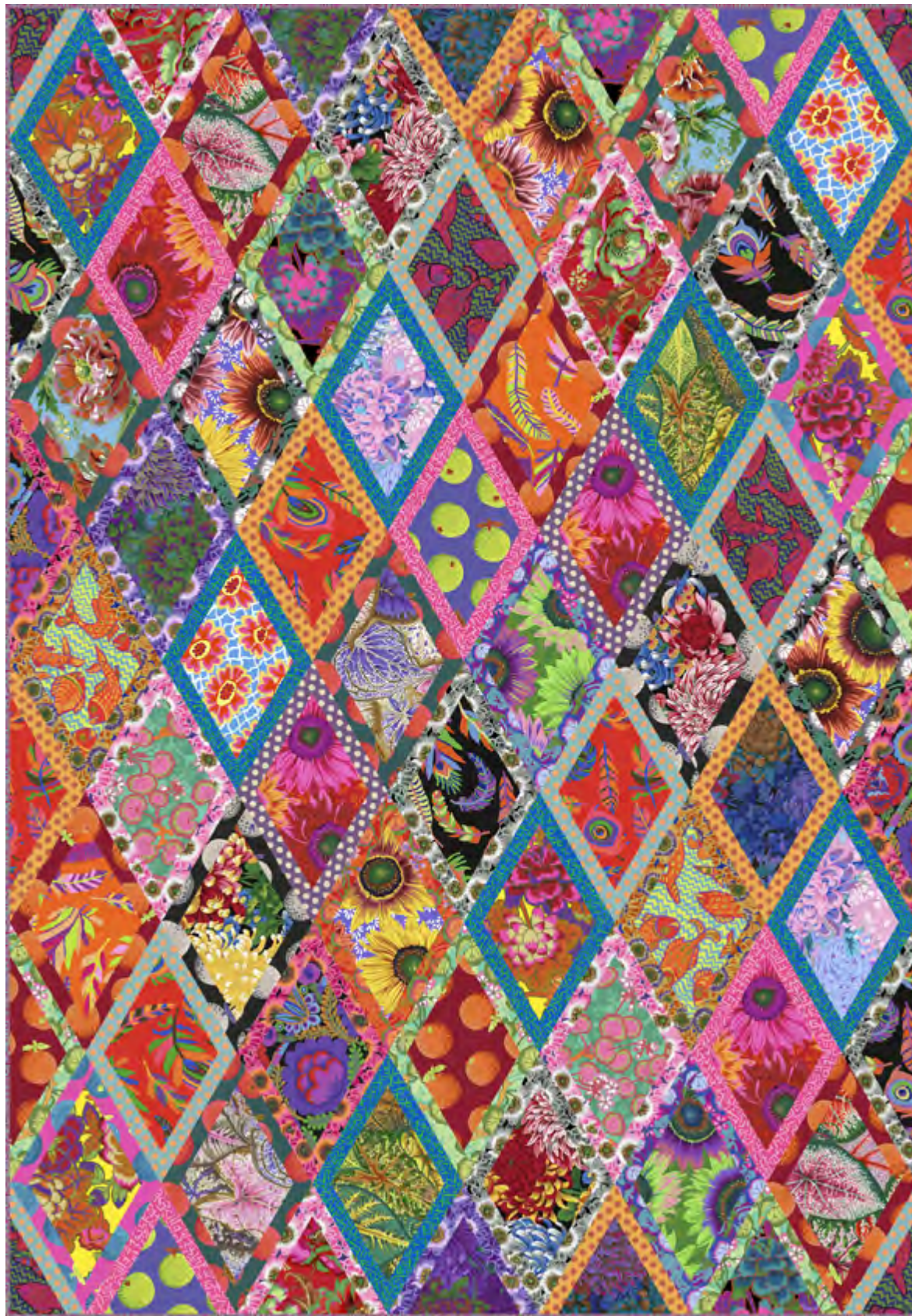
+108" Width fabric is on 12yd Bolts

All fabric quantities are based on 15yd Bolts unless otherwise indicated.

Yardage amounts above are estimates to buy against, not kit against.
 For kitting please refer to the final pattern. It is recommended you make a quilt top prior to kitting.

This presentation is a fair representation of design, scale and color of each fabric. The final fabrics may have very minimal changes.

Bordered Diamonds Quilt



Designed by Kaffe Fassett

Finished Size: 56" x 80" (1.42m x 2.03m)

Technique: Templates & Piecing

Pattern available at freespiritfabrics.com - August 2021

Bordered Diamonds Quilt Ordering Guide

SKU	Yards	Meters	12 Kits	24 Kits	SKU	Yards	Meters	12 Kits	24 Kits
PWBM079.YELLOW	18" x 21"	.45m x .53m	1 bolt	1 bolt	PWBM080.BLACK	1/2 yard	0.46m	1 bolt	1 bolt
PWPJ107.GREY	18" x 21"	.45m x .53m	1 bolt	1 bolt	PWBM079.GREEN	1/2 yard	0.46m	1 bolt	1 bolt
PWPJ108.BRIGHT	18" x 21"	.45m x .53m	1 bolt	1 bolt	PWGP177.MAROON	1/2 yard	0.46m	1 bolt	1 bolt
PWPJ108.PASTEL	18" x 21"	.45m x .53m	1 bolt	1 bolt	PWBM078.BLUE	3/8 yard	0.34m	1 bolt	1 bolt
PWPJ109.NATURAL	18" x 21"	.45m x .53m	1 bolt	1 bolt	PWPJ112.GREY	1/4 yard	0.23m	1 bolt	1 bolt
PWPJ111.GREEN	18" x 21"	.45m x .53m	1 bolt	1 bolt	GP70.TURQ	1/4 yard	0.23m	1 bolt	1 bolt
PWPJ108.GOLD	18" x 21"	.45m x .53m	1 bolt	1 bolt	PWGP177.RED	1/4 yard	0.23m	1 bolt	1 bolt
PWBM080.ORANGE	18" x 21"	.45m x .53m	1 bolt	1 bolt	PWPJ110.GREEN	1/4 yard	0.23m	1 bolt	1 bolt
PWBM081.BLUE	18" x 21"	.45m x .53m	1 bolt	1 bolt	PWPJ112.PINK	1/4 yard	0.23m	1 bolt	1 bolt
PWGP046.PURPLE	18" x 21"	.45m x .53m	1 bolt	1 bolt	PWBM078.PINK	1/4 yard	0.23m	1 bolt	1 bolt
PWPJ109.RED	18" x 21"	.45m x .53m	1 bolt	1 bolt	GP70.GOLD	1/4 yard	0.23m	1 bolt	1 bolt
PWPJ107.GREEN	18" x 21"	.45m x .53m	1 bolt	1 bolt	PWPJ110.RED	1/8 yard	0.11m	1 bolt	1 bolt
PWGP185.PURPLE	18" x 21"	.45m x .53m	1 bolt	1 bolt	PWGP177.CONTRAST	1/8 yard	0.11m	1 bolt	1 bolt
PWPJ110.DUCKEGG	18" x 21"	.45m x .53m	1 bolt	1 bolt	PWPJ112.ORANGE	1/8 yard	0.11m	1 bolt	1 bolt
PWPJ107.DARK	18" x 21"	.45m x .53m	1 bolt	1 bolt	PWPJ110.PURPLE	1/8 yard	0.11m	1 bolt	1 bolt
PWGP177.LAVENDER	18" x 21"	.45m x .53m	1 bolt	1 bolt	PWGP177.PINK	1/8 yard	0.11m	1 bolt	1 bolt
PWGP046.ORANGE	1/2 yard	0.46m	1 bolt	1 bolt	PWPJ110.BLACK	1/8 yard	0.11m	1 bolt	1 bolt
PWPJ111.BRIGHT	1/2 yard	0.46m	1 bolt	1 bolt	PWPJ112.LAVENDER	1/8 yard	0.11m	1 bolt	1 bolt
PWPJ107.NATURAL	1/2 yard	0.46m	1 bolt	1 bolt	PWPJ112.MAGENTA	1/8 yard	0.11m	1 bolt	1 bolt
PWPJ111.RED	1/2 yard	0.46m	1 bolt	1 bolt	GP70.GRAPE	1/8 yard	0.11m	1 bolt	1 bolt
PWBM080.RED	1/2 yard	0.46m	1 bolt	1 bolt	PWBM078.GREY*	2/3 yard	0.61m	1 bolt	2 bolts

Backing Fabric Options

PWPJ108.DARK - 44" Width	5 yards	4.57m	4 bolts	8 bolts
QBG007.JADE - 108"Width+	1 7/8 yards	1.71m	2 bolts	4 bolts

* Indicates Binding Fabric

+108" Width fabric is on 12yd Bolts

All fabric quantities are based on 15yd Bolts unless otherwise indicated.

Yardage amounts above are estimates to buy against, not kit against.

For kitting please refer to the final pattern. It is recommended you make a quilt top prior to kitting.

This presentation is a fair representation of design, scale and color of each fabric. The final fabrics may have very minimal changes.

Melon Blossom Quilt



Designed by Tammy Silvers of Tamarinis

Finished Size: 72" x 93" (1.82m x 2.36m)

Technique: Fused Applique

Pattern available for purchase at tamarinis.com

Melon Blossom Quilt Ordering Guide

SKU	Yards	Meters	12 Kits	24 Kits
PWGP046.BLUE	2/3 yard	0.60m	1 bolt	2 bolts
PWGP177.CITRUS	1 1/4 yards	1.14m	1 bolt	2 bolts
PWPJ109.RED	1 1/4 yards	1.14m	1 bolt	2 bolts
PWPJ110.RED	2/3 yard	0.60m	1 bolt	2 bolts
PWPJ110.GREEN*	2 1/2 yards	2.29m	2 bolts	4 bolts
PWPJ111.RED	2/3 yard	0.60m	1 bolt	2 bolts
PWPJ112.PINK	1 yard	0.91m	1 bolt	2 bolts
PWBM078.BLUE	2 yards	1.83m	2 bolts	4 bolts
PWBM079.YELLOW	1 yard	0.91m	1 bolt	2 bolts
PWBM081.GREY	1 yard	0.91m	1 bolt	2 bolts

Backing Fabric Options

PWPJ107.NATURAL - 44" Width	5 yards	4.57m	4 bolts	8 bolts
QBG007.JADE - 108"Width+	2 3/4 yards	2.51m	3 bolts	6 bolts

* Indicates Binding Fabric

+108" Width fabric is on 12yd Bolts

All fabric quantities are based on 15yd Bolts unless otherwise indicated.



44" Wide Backing Option
PWPJ107.NATURAL

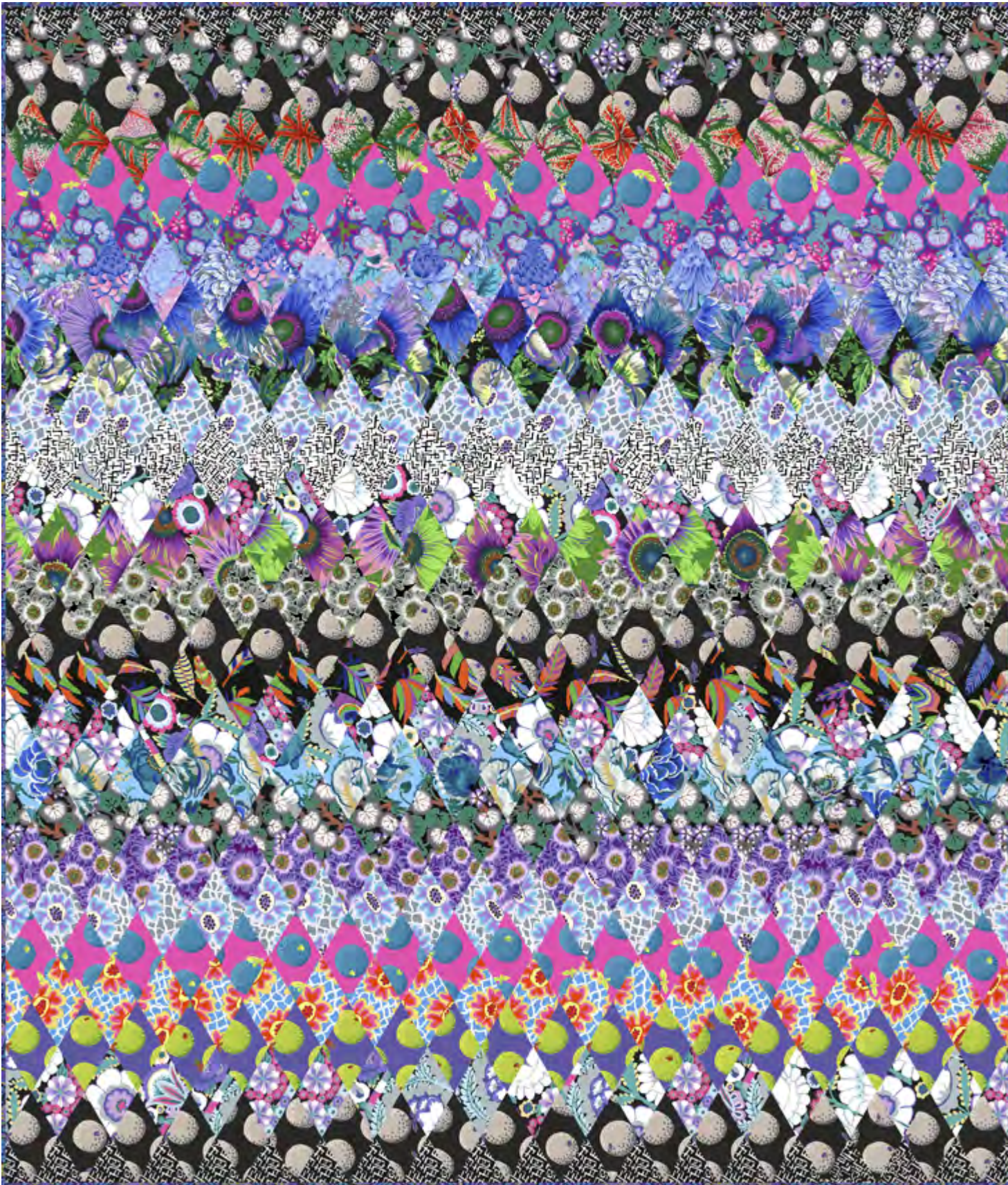


108" Wide Backing Option
QBG007.JADE

Yardage amounts above are estimates to buy against, not kit against.
For kitting please refer to the final pattern. It is recommended you make a quilt top prior to kitting.

This presentation is a fair representation of design, scale and color of each fabric. The final fabrics may have very minimal changes.

Contrast Diamonds Quilt



Designed by Kaffe Fassett

Finished Size: 65" x 77" (1.65m x 1.95m)

Technique: Templates & Piecing

Pattern available at freespiritfabrics.com - August 2021

Contrast Diamonds Quilt Ordering Guide

SKU	Yards	Meters	12 Kits	24 Kits
PWPJ110.BLACK	5/8 yard	0.57m	1 bolt	1 bolt
PWGP177.CONTRAST	7/8 yard	0.80m	1 bolt	2 bolts
PWPJ108.PASTEL	3/8 yard	0.34m	1 bolt	1 bolt
PWGP177.PINK	5/8 yard	0.57m	1 bolt	1 bolt
PWPJ110.PURPLE	3/8 yard	0.34m	1 bolt	1 bolt
PWPJ107.GREY	3/8 yard	0.34m	1 bolt	1 bolt
PWPJ111.BLUE	3/8 yard	0.34m	1 bolt	1 bolt
PWPJ109.CONTRAST	3/8 yard	0.34m	1 bolt	1 bolt
PWBM081.GREY	5/8 yard	0.57m	1 bolt	1 bolt
PWBM078.WHITE	3/8 yard	0.34m	1 bolt	1 bolt
PWGP185.CONTRAST	7/8 yard	0.80m	1 bolt	2 bolts
PWPJ111.GREEN	3/8 yard	0.34m	1 bolt	1 bolt
PWPJ112.GREY	3/8 yard	0.34m	1 bolt	1 bolt
PWBM080.BLACK	3/8 yard	0.34m	1 bolt	1 bolt
PWPJ109.BLUE	3/8 yard	0.34m	1 bolt	1 bolt
PWPJ112.LAVENDER	3/8 yard	0.34m	1 bolt	1 bolt
PWBM081.BLUE	3/8 yard	0.34m	1 bolt	1 bolt
PWGP177.LAVENDER	3/8 yard	0.34m	1 bolt	1 bolt
PWBM078.BLACK	3/8 yard	0.34m	1 bolt	1 bolt
PWBM079.BLUE*	5/8 yard	0.57m	1 bolt	1 bolt

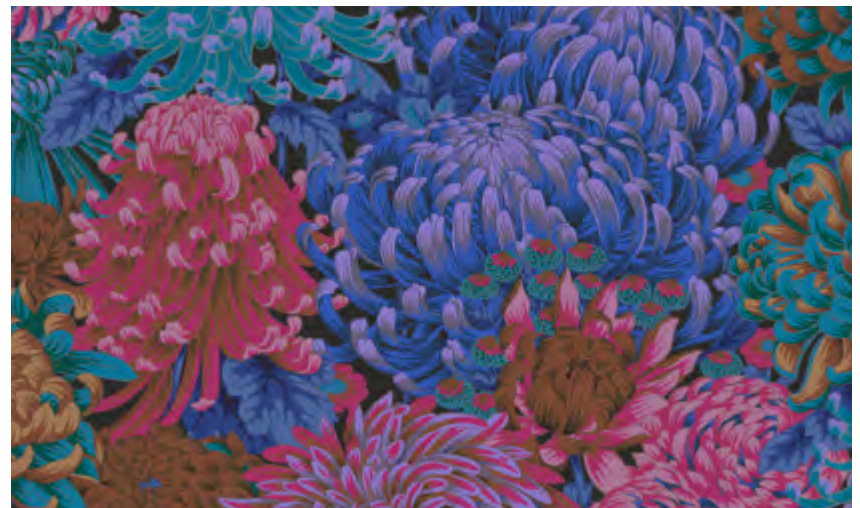
Backing Fabric Options

PWPJ107.DARK - 44" Width	4 3/4 yards	4.34m	4 bolts	8 bolts
QBBM001.BLACK - 108"Width+	2 1/8 yards	1.94m	3 bolts	5 bolts

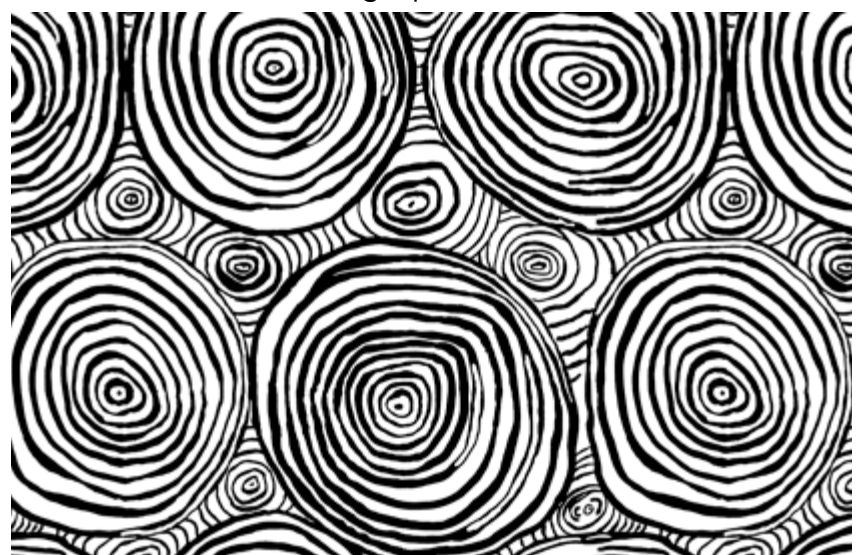
* Indicates Binding Fabric

+108" Width fabric is on 12yd Bolts

All fabric quantities are based on 15yd Bolts unless otherwise indicated.



44" Wide Backing Option - PWPJ107.DARK



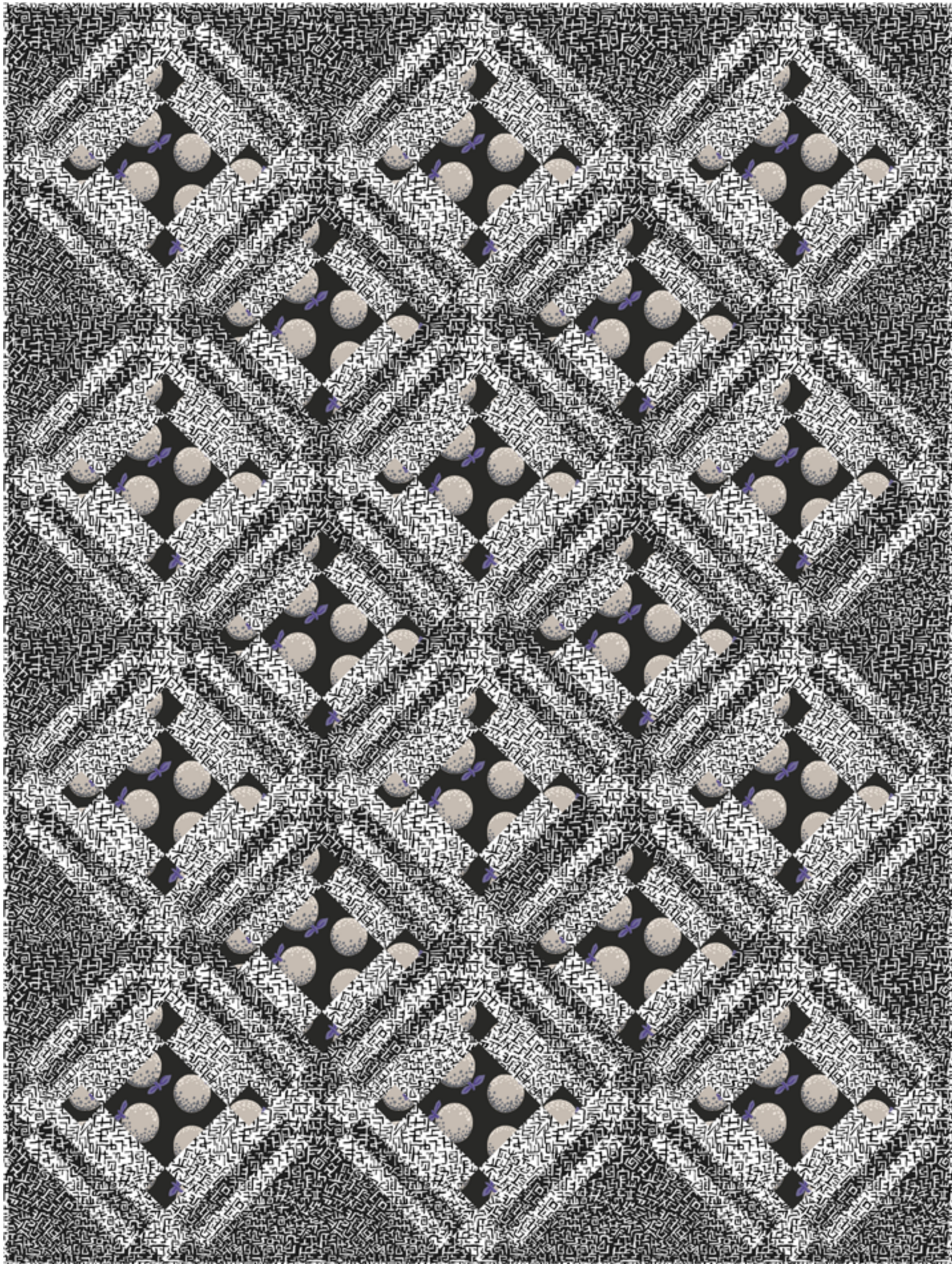
108" Wide Backing Option - QBBM001.BLACK

Yardage amounts above are estimates to buy against, not kit against.

For kitting please refer to the final pattern. It is recommended you make a quilt top prior to kitting.

This presentation is a fair representation of design, scale and color of each fabric. The final fabrics may have very minimal changes.

Juxtaposition Oranges Quilt



Designed by Tammy Silvers of Tamarinis
 Finished Size: 53 1/2" x 71" (1.35m x 1.80m)
 Technique: Strip Pieced
 Pattern available for purchase at tamarinis.com

Juxtaposition Oranges Quilt Ordering Guide

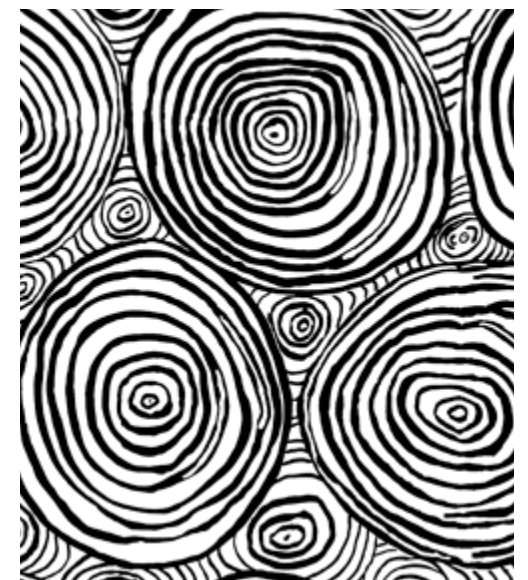
SKU	Yards	Meters	12 Kits	24 Kits
PWGP177.CONTRAST	1 yard	0.91m	1 bolt	2 bolts
PWBM078.BLACK	2 yards	1.83m	2 bolts	4 bolts
PWBM078.WHITE*	2 1/2 yards	2.29m	2 bolts	4 bolts
Backing Fabric Options				
PWBM080.BLACK - 44" Width	5 1/2 yards	5.03m	5 bolts	9 bolts
QBBM001.BLACK - 108"Width+	2 yards	1.83m	2 bolts	4 bolts

* Indicates Binding Fabric
 +108" Width fabric is on 12yd Bolts

All fabric quantities are based on 15yd Bolts unless otherwise indicated.



44" Wide Backing Option
 PWBM080.BLACK



108" Wide Backing Option
 QBBM001.BLACK

Yardage amounts above are estimates to buy against, not kit against.
 For kitting please refer to the final pattern. It is recommended you make a quilt top prior to kitting.

This presentation is a fair representation of design, scale and color of each fabric. The final fabrics may have very minimal changes.

Journey's Quilt



Designed by Tammy Silvers of Tamarinis
 Finished Size: 64" x 75" (1.62m x 1.90m)
 Technique: Strip Pieced, Fussy Cut
 Pattern available for purchase at tamarinis.com

Journey's Quilt Ordering Guide

SKU	Yards	Meters	12 Kits	24 Kits
PWGP046.BLUE	5/8 yard	0.57m	1 bolt	1 bolt
PWGP185.PURPLE	1 1/4 yards	1.14m	1 bolt	2 bolts
PWGP185.GREEN	1 1/4 yards	1.14m	1 bolt	2 bolts
PWPJ109.CONTRAST*	1 1/4 yards	1.14m	1 bolt	2 bolts
PWPJ110.GREEN	1 1/4 yards	1.14m	1 bolt	2 bolts
PWPJ111.GREEN	1/2 yard	0.46m	1 bolt	1 bolt
PWBM078.BLUE	1 1/2 yards	1.37m	2 bolt	3 bolts

Backing Fabric Options

PWPJ107.GREEN - 44" Width	4 1/2 yards	4.11m	4 bolts	8 bolts
QBG007.PURPLE - 108"Width+	2 1/2 yards	2.29m	3 bolts	5 bolts

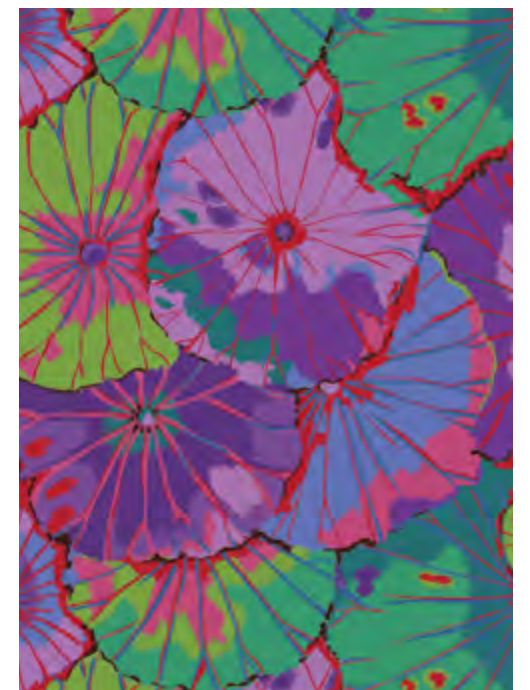
* Indicates Binding Fabric

+108" Width fabric is on 12yd Bolts

All fabric quantities are based on 15yd Bolts unless otherwise indicated.



44" Wide Backing Option
 PWPJ107.GREEN



108" Wide Backing Option
 QBGP007.PURPLE

Yardage amounts above are estimates to buy against, not kit against.
 For kitting please refer to the final pattern. It is recommended you make a quilt top prior to kitting.

This presentation is a fair representation of design, scale and color of each fabric. The final fabrics may have very minimal changes.

Peaks and Valleys Quilt



Designed by Tammy Silvers of Tamarinis
 Finished Size: 60" x 75" (1.52m x 1.90m)

Technique: Pieced

Pattern available for purchase at tamarinis.com

Peaks and Valleys Quilt Ordering Guide

SKU	Yards	Meters	12 Kits	24 Kits
PWPJ107.GREEN*	1 1/4 yards	1.14m	1 bolt	2 bolts
PWPJ107.DARK	3/4 yard	0.69m	1 bolt	2 bolts
PWPJ107.GREY	3/4 yard	0.69m	1 bolt	2 bolts
PWPJ108.RED	1 1/4 yards	1.14m	1 bolt	2 bolts
PWPJ110.PURPLE	3/4 yard	0.69m	1 bolt	2 bolts
PWPJ111.BLUE	1 1/4 yards	1.14m	1 bolt	2 bolts
PWPJ112.LAVENDER	1 1/4 yards	1.14m	1 bolt	2 bolts
PWBM078.DELFT	5/8 yard	0.57m	1 bolt	1 bolt
PWBM079.DELFT	1 1/4 yards	1.14m	1 bolt	2 bolts
PWBM081.GREY	3/4 yard	0.69m	1 bolt	2 bolts

Backing Fabric Options

PWGP185.PURPLE - 44" Width	4 yards	3.66m	4 bolts	7 bolts
QBG006.BLUE - 108" Width+	2 1/2 yards	2.29m	3 bolts	5 bolts

* Indicates Binding Fabric

+108" Width fabric is on 12yd Bolts

All fabric quantities are based on 15yd Bolts unless otherwise indicated.



44" Wide Backing Option
 PWGP185.PURPLE



108" Wide Backing Option
 QBGP006.BLUE

Yardage amounts above are estimates to buy against, not kit against.
 For kitting please refer to the final pattern. It is recommended you make a quilt top prior to kitting.

This presentation is a fair representation of design, scale and color of each fabric. The final fabrics may have very minimal changes.

KAFFE FASSETT COLLECTIVE

for

Free Spirit

August 2021

Featuring re-imagined designs by Kaffe Fassett
& new designs from Brandon Mably and Philip Jacobs.



@kaffefassettstudio



@kaffefassettstudio



@KaffeFassettStu



KaffeFassettStudio

68's COTTON

100% Cotton • 44/45" (114 cm) Wide
15 Yds (13.7 m) D/R • Imported Screen Print

Care Instructions

Machine wash cold, normal cycle with like colors.
Do not bleach. Tumble dry low. Warm iron.

⚠️ Not suitable for children's sleepwear.



SHOT COTTONS

100% Cotton • 44/45" (114 cm) Wide
10 Yds (9.14 m) D/R • Imported Yarn Dyed Woven

Care Instructions

Machine wash cold, normal cycle with like colors.
Do not bleach. Tumble dry low. Warm iron.

⚠️ Not suitable for children's sleepwear.



FreeSpirit Fabrics
11121 Carmel Commons Blvd
Suite 280
Charlotte, NC 28226
1-866-907-3305



www.freespiritfabrics.com

#freespiritfabrics

These designs are the property of FreeSpirit and are submitted to you in confidence for the sole purpose of soliciting your orders, in consideration of which you agree not to copy these designs or cause them to be copied directly or indirectly.
©2021 All Rights Reserved

Note: Paper reference and fabrics will never match exactly.